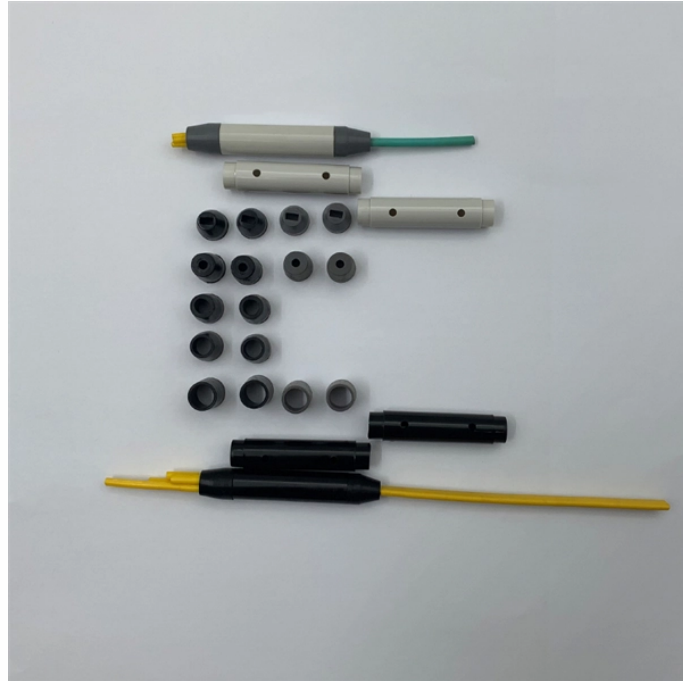


White Light Fiber Optic Sensor



White Light Fiber Optic Sensor

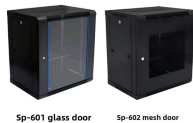


Several variations in the signal processing techniques for white light interferometry are discussed and compared in terms of resolution, bandwidth and cost. A detailed analysis is made of the principle of ...



White LED light source enables stable detection of subtle color contrasts of dark colors that a sensor with red LED light source may have had difficulty in detection.

Mesh door/glass door optional



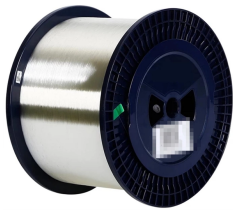
Opsens'' founders are known to have pioneered the use of white-light interferometry for fiber optic sensing and to have brought this type of sensing technology to the industrial sensors marketplace.



This article provides some optical fiber sensor network technologies based on the white light interference technology.



In this Letter, we propose a white-light-driven self-reference sensing system with FBGs, using a Mach-Zehnder interferometer (MZI) and a white light source, to realize multiplexed high-resolution ...



A schematic diagram of the white light interferometric linear sensor array based on an adjustable Fabry-Perot (F-P) scanning cavity is shown in Fig. 4.



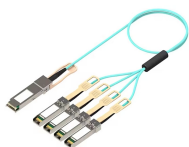
In this article, we proposed an RFOS array based on frequency division multiplexing (FDM) technology. Using a broadband light source as the driving light source, the multiplexed system ...



This article provides some optical fiber sensor network technologies based on the white light interference technology.



Opsens'' founders are known to have pioneered the use of white-light interferometry for fiber optic sensing and to have brought this type of sensing technology to the industrial sensors marketplace.



By using the white-light multi-beam interferometry, the resonant peaks of a fiber Fabry-Perot interferometer sensor are obtained, and the resonance drifts are tracked for sensor readout by using ...



A novel signal-processing algorithm based on frequency estimation of the spectrogram of single-mode optical fiber Fabry-Perot interferometric sensors under white-light illumination is described.



This article provides a comprehensive introduction to fiber-optic sensors, also called optical fiber sensors. It explains how these devices use optical fibers to measure quantities like temperature, ...

Contact Us

For more information, pricing, or custom solutions, please contact us:

Website: <https://www.samastersbaseball.co.za>

Email: sales@samastersbaseball.co.za

Phone: +27 63 874 2095

Address: 15 Innovation Drive, Technopark, Stellenbosch, 7600, South Africa

This document is for informational purposes only. Specifications subject to change without notice.

