

## Where is the optical module connected



### Overview

Optical modules typically have an electrical interface on the side that connects to the inside of the system and an optical interface on the side that connects to the outside world through a fiber optic cable. An optical module is a typically hot-pluggable optical transceiver used in high-bandwidth data communications applications. As the core optoelectronic devices operating at the Physical Layer of the OSI model, their. As an essential component of optical fiber communication, optical modules are optoelectronic devices that facilitate the conversion between optical and electrical signals during the transmission process.

## Where is the optical module connected



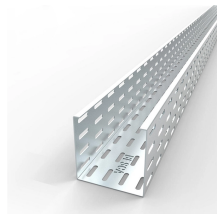
An optical module is mainly composed of optoelectronic devices (including the optical transmitter and optical receiver), functional circuitry, and optical interfaces. Its fundamental role is to bridge the gap ...



In the era of 5G, AI, and high-speed data centers, optical modules serve as the core bridge for converting electrical signals to optical signals (and vice versa), enabling fast, reliable data ...



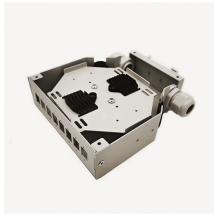
Explore the ultimate guide to optical modules. Learn types, functions, performance metrics & how to choose the right module for your fiber network.



Most SFP fiber optic modules use LC connectors, while SC connectors are mainly found in legacy networks and MPO/MTP connectors are used for high-density cabling rather than directly on ...



Today, when we talk about optical modules, we usually mean optical transceivers (and this will be the case throughout the text). Optical modules operate at the physical layer, which is the bottom layer of ...



Sometimes the optical module is replaced by an electrical interface module that implements either an active or passive electrical connection to the outside world.



Finally, connect the fiber optic patch cord to the optical module and device or application. After installation, check the optical signal power and quality to ensure the optical module is ...



On an optical network, a sender needs to convert electrical signals into optical signals before sending them to a receiver, and the receiver needs to convert received optical signals into electrical signals. ...



Average optical power refers to the optical module in normal operating conditions at the transmitter side of the light source output optical power, can be understood as the intensity of light.



1. Working Principle of Optical Module As an essential component of optical fiber communication, optical modules are optoelectronic devices that facilitate the conversion between optical and electrical ...

## Contact Us

For more information, pricing, or custom solutions, please contact us:

Website: <https://www.samastersbaseball.co.za>

Email: [sales@samastersbaseball.co.za](mailto:sales@samastersbaseball.co.za)

Phone: +27 63 874 2095

Address: 15 Innovation Drive, Technopark, Stellenbosch, 7600, South Africa

This document is for informational purposes only. Specifications subject to change without notice.

