

What technologies can be deployed on an ENSP aggregation switch

Product Photography



Overview

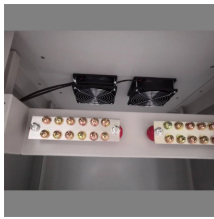
□□ New eNSP Project – Ethernet Link Aggregation Implementation I recently worked on a new hands-on lab using eNSP, where I implemented Ethernet Link Aggregation (Eth-Trunk) to enhance network performance and redundancy. □□ The topology consists of three switches connected together. □□ Between. Link aggregation, is a computer network term, refers to a plurality of physical ports together to form a logical port to achieve the load sharing of / intravaver traffic throughput at the load sharing of each member port. 1AX) that allows multiple Ethernet interfaces to operate as a single logical link. Key benefits of link aggregation: Higher. What is Port Isolation & How Port Isolation Works?

Configuration on eNSP huawei The goal is to build a realistic enterprise network that demonstrates how organizations can ensure scalability, high availability, security, and efficient data communication using Huawei routers, · GitHub Enterprise Network Design and Implementation Using Huawei Datacom Technologies □□ Project.

What technologies can be deployed on an ENSP aggregation switch



Link aggregation is mainly used to connect access layer switches and aggregation layer switches to greatly increase the transmission rate.



This document provides summaries of commands for configuring routing, VLANs, ...



Devices that are directly connected through an Eth-Trunk can support LACP, by running the mode lacp-static command you can configure the Eth-Trunk to work in static LACP mode. This mode can ...



The meaning of TECHNOLOGY is the practical application of scientific knowledge especially in a particular area : engineering.



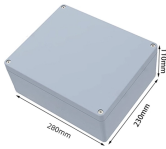
From smartphones to artificial intelligence, from cloud computing to virtual reality, the world of technology is vast and continually expanding. Understanding different types of technology is ...



Link aggregation can work in manual mode or Link Aggregation Control Protocol (LACP) mode. In manual mode, you must manually create an Eth-Trunk and add member interfaces to the Eth-Trunk.



TECHNOLOGY definition: the branch of knowledge that deals with the creation and use of technical means and their interrelation with life, society, and the environment, drawing upon such subjects as ...



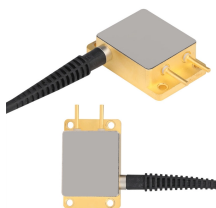
This document provides summaries of commands for configuring routing, VLANs, link aggregation, and other features on Huawei networking devices.



☐☐ New eNSP Project - Ethernet Link Aggregation Implementation I recently worked on a new hands-on lab using eNSP, where I implemented Ethernet Link Aggregation (Eth-Trunk) to enhance...



The two in front of me talk about the aggregation of manual mode and LACP mode, both of which are the aggregation of switches and switches. Now let's talk about the link aggregation between rout...



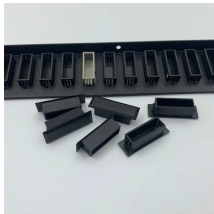
Technology Definition Technology refers to the application of scientific knowledge, tools, systems, and techniques to solve problems, improve efficiency, and enhance human life. It includes everything ...



Technologies is an international, peer-reviewed, open access journal singularly focusing on emerging scientific and technological trends, published monthly online by MDPI.



Implementation in eNSP - Configure Huawei routers, switches, and security devices in a simulated environment. Services Configuration - Implement key services such as VLANs, routing, DHCP, NAT, ...



This article provides a comprehensive explanation of link aggregation — covering LACP, static vs dynamic link aggregation, and MLAG (Link Aggregation Plus) — along with real ...



Technologies have contributed to human welfare through increased prosperity, improved comfort and quality of life, and medical progress, but they can also disrupt existing social hierarchies, cause ...



Switch 1 and Switch 2 are interconnected through three Layer 3 Gigabit ports. The user wants to configure link aggregation between switch 1 and switch 2, to realize the intercommunication between ...



How to Configure Link Aggregation or Port Channel or Eth-Trunk in Manual Mode in eNSP Huawei 7



technology, the application of scientific knowledge to the practical aims of human life—or, as it is sometimes phrased, to the change and manipulation of the human environment. The word ...



We usually think of technology as something new - like AI or virtual reality glasses. But technology refers to any new concept, tool, or machine developed by humans. It can range from ...



Technology industry news, commentary and analysis, with reporting on big tech, startups, and internet culture.

Contact Us

For more information, pricing, or custom solutions, please contact us:

Website: <https://www.samastersbaseball.co.za>

Email: sales@samastersbaseball.co.za

Phone: +27 63 874 2095

Address: 15 Innovation Drive, Technopark, Stellenbosch, 7600, South Africa

This document is for informational purposes only. Specifications subject to change without notice.

