

What kind of seal is used for explosion-proof distribution boxes



Overview

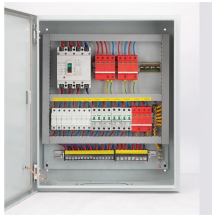
Roxtec Ex solutions prevent ignition of explosive atmospheres. Typical applications are Ex e and/or Ex tb rated electrical enclosures, such as transformers, motors, generators and junction bo.



What kind of seal is used for explosion-proof distribution boxes



One of the possible solution, as mentioned above, is the use of sealing fittings, which are subdivided into types such as: EYD series for piping coupling downstream with the appropriate drainage device for ...



The Roxtec Ex product range includes a wide variety of seals to handle different cable sizes and openings. The products are designed and certified for use in Zone 1 and 2 for gas (including vapor ...



A line bushing is comprised of a threaded or non-threaded sleeve that encapsulates one or several cores for a completely flameproof, waterproof, and gas-proof barrier.



Seals, whether a conduit seal, cable gland seal, or seal connector, are integral parts of a safe electrical distribution system in harsh and hazardous environments.



Discover the importance of sealing and encapsulation in explosion-proof designs to enhance safety and prevent harmful explosions in critical environments.



According to NEC 501.15a , seal offs must be applied in each nipple or conduit connection to an explosion proof enclosure. A drain seal is required where moisture could potentially ...



Explosion-proof seals typically use rubber materials with excellent chemical and high-temperature resistance, such as fluororubber (FKM) or hydrogenated nitrile rubber (HNBR), ensuring ...



At Douglas Electrical Components, we provide explosion proof electrical fittings such as electrical feedthroughs, explosion proof wire seals, and wire bushings for hazardous locations in custom and ...



In phase 1, the first explosion occurs and spreads to the following enclosures, due to the lack of sealing fittings. During the phase 2 the pressure increases, causing a second burst of greater ...



Generally, conduit seals are required within 18 inches of the point of entry to explosion-proof enclosures. This requirement seeks to contain explosions and flames within the enclosure and ...

Contact Us

For more information, pricing, or custom solutions, please contact us:

Website: <https://www.samastersbaseball.co.za>

Email: sales@samastersbaseball.co.za

Phone: +27 63 874 2095

Address: 15 Innovation Drive, Technopark, Stellenbosch, 7600, South Africa

This document is for informational purposes only. Specifications subject to change without notice.

