

What is a cross-segment industrial switch



Overview

Industrial Layer 2 Managed Switches or Layer 2+ Switches are designed to operate at extreme temperatures up to -40 to 75°C (-40 to 167°F) and in areas with electromagnetic interference, allowing for the creation of cost-effective, reliable, and secure networks. A zone is a collection of physically and functionally united assets that have similar security requirements. Some characteristics of a security zone are: A conduit supports the. Industrial VLAN Trunking is what makes OT network segmentation work across more than one switch. This article delves into VLAN technology, explores various segmentation methods, and offers guidance on choosing and deploying the most suitable VLAN. are used for different reasons. However, these reasons always involve increased security nicate within the assigned VLAN. Communication across VLA VLA cal Area Networks" (VLANs) work. And yet, industry is still asking what do I need to comply?

Can I follow IEC 62443?

What about.

What is a cross-segment industrial switch



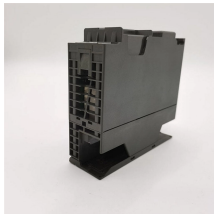
Unmanaged and managed switches in various designs are available to enhance performance and security. These robust switches are designed for industrial use and are fully compliant with IEEE ...



Industrial Ethernet switches are high-reliability and cost-effective network devices designed to be applied in harsh industrial environments where they are likely to ...



Overview: Assigns specific switch ports to VLANs, creating isolated traffic paths. Best Suited For: Small-scale factories or warehouses with fixed equipment like PLCs and HMIs.



Industrial VLAN Trunking is what makes OT network segmentation work across more than one switch. This walkthrough shows engineering managers how managed switches build MAC ...



Each segment runs at 10 or 100 Mbps, which in turn increases total bandwidth. For frames that has a source and destination on the same LAN segment, traffic can be contained in the specific LAN ...



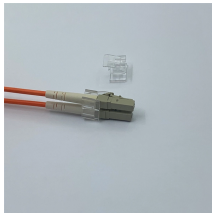
Industrial Ethernet switches are high-reliability and cost-effective network devices designed to be applied in harsh industrial environments where they are likely to be subject to shocks, vibration and extreme ...



The Switch is a network device that is used to segment the networks into different subnetworks called subnets or LAN segments. It is responsible for filtering and forwarding the ...



Switches with VLAN capability can assign the tagged frames to specific VLANs and therefore set up logically separated networks based on a shared infrastructure.



In the wave of the Industrial Internet of Things (IIoT), industrial Ethernet switches are no longer mere "data carriers"; they have evolved into the core hub connecting devices, ensuring security, and ...



CyberVision discovers industrial assets and communications and groups it into Zones. ISE implemented for visibility and CyberVision context is shared with ISE.



Based on these principles, ISA/IEC 62443 recommends segmenting the functional levels of an industrial network into zones and conduits. A zone is a collection of physically and functionally ...

Contact Us

For more information, pricing, or custom solutions, please contact us:

Website: <https://www.samastersbaseball.co.za>

Email: sales@samastersbaseball.co.za

Phone: +27 63 874 2095

Address: 15 Innovation Drive, Technopark, Stellenbosch, 7600, South Africa

This document is for informational purposes only. Specifications subject to change without notice.

