

What hardware is inside a network cabinet



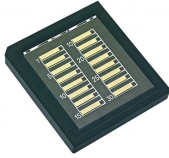
What hardware is inside a network cabinet



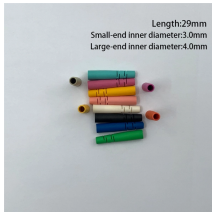
network/LAN cabinets usually prioritize cable management and patching access server cabinets usually prioritize depth, weight capacity, and stronger airflow for deep server chassis So, while the terms are ...



It typically includes patch panels, switches, routers, and power distribution units, allowing for easy management and troubleshooting of your network. Find out how to set up and optimize your home ...



“A network cabinet is a metal shelter used for apprehending networking devices like routers, switches, patch panels and servers.” Such ...



A Network Cabinet, often interchangeably called a server rack, is a physical frame or enclosure designed to house and organize various types of network hardware and accessories.



Network cabinets house a variety of rack-mountable hardware, including servers, switches, routers, patch panels, and storage devices. These components are securely mounted in ...



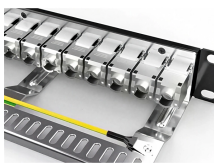
server racks are the unsung heroes of the digital age. they stand as the backbone of modern data centers and enterprise environments, housing a dense array of critical it equipment.



Having sufficient knowledge about what happens in a network cabinet will be enable you to benefit from those devices. Without much ado, let's quickly take a look at some of the major ...



A network cabinet, is a physical frame or enclosure designed to house and organize various types of network hardware and accessories. These include routers, switches, servers, patch ...



“A network cabinet is a metal shelter used for apprehending networking devices like routers, switches, patch panels and servers.” Such enclosures assist you in systematizing as well as ...



Routers: Your gateway to the internet, connecting your local network to the wider world. Patch Panels: The tidy termination point for all your network cables running through walls and ...



Simply put, a network cabinet (or network rack) is a metal enclosure used to hold and organize IT and networking equipment. This includes switches, routers, patch panels, servers, UPS ...



It typically includes patch panels, switches, routers, and power distribution units, allowing for easy management and troubleshooting of your network. Find out how ...

Contact Us

For more information, pricing, or custom solutions, please contact us:

Website: <https://www.samastersbaseball.co.za>

Email: sales@samastersbaseball.co.za

Phone: +27 63 874 2095

Address: 15 Innovation Drive, Technopark, Stellenbosch, 7600, South Africa

This document is for informational purposes only. Specifications subject to change without notice.

