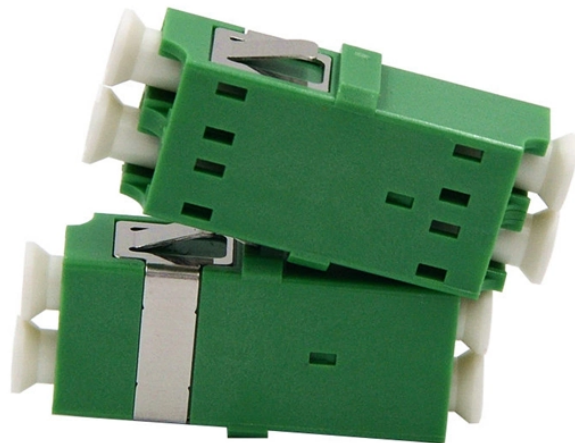


What does galvanized cable tray include



What does galvanized cable tray include



Cable tray length is selected based on the load to be supported, the distance between the supports (also referred to as the span), and handling and installation constraints.



Heavy duty cable trays and cable ladders are manufactured from pre-galvanized, electro-galvanized, or hot-dipped galvanized sheet metal, designed to meet ideal environmental working conditions for ...



Our wind certification report provides you with list of acceptable B-Line series cable tray supports, fittings and covers based off of the environmental conditions, cable loading, and type of cable tray in your ...



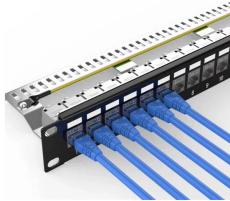
WireRun ® Cable Trays can be installed either in a ceiling, in a raised floor or along a wall with brackets, and are easily altered to make turns to complete the path. Made of electro zinc-plated galvanized ...



These trays organize and route cables efficiently through buildings and facilities. The galvanization process adds a zinc coating that helps prevent corrosion. This feature makes them ...



Maximize durability and safety with our professional buyer's guide. Learn how to select the right galvanized cable trays for industrial environments, ensuring long-term corrosion resistance.



Due to their corrosion-resistant abilities, the GI tray systems are preferred over aluminum or plastic. The galvanization process enhances the durability of the cable tray, where cables require ...



At its core, a galvanized cable tray is a steel-based cable support system that has been coated with zinc to protect against rust and oxidation. This protective layer makes the tray far more ...



Learn the main types of galvanized cable trays, including HDG cable tray, GI cable tray and Pre-galvanized cable tray.



Explore an advanced dimension of cable organization with our Galvanized Cable Trays. Meticulously crafted for seamless cable routing and enhanced protection, these trays embody both robustness ...



Constructed of different materials such as galvanized iron (GI), stainless steel, or hot dip galvanized steel, perforated cable trays are strong and corrosion-resistant.



These types of trays are made from steel that resists corrosion, thereby ensuring durability even in the most critical indoor, industrial, or high-humidity ...

Contact Us

For more information, pricing, or custom solutions, please contact us:

Website: <https://www.samastersbaseball.co.za>

Email: sales@samastersbaseball.co.za

Phone: +27 63 874 2095

Address: 15 Innovation Drive, Technopark, Stellenbosch, 7600, South Africa

This document is for informational purposes only. Specifications subject to change without notice.

