

What are the different models of modules with optocouplers



Overview

Optocouplers can be categorized by output element type, application environment, and functional characteristics. This unique design ensures that the two circuits remain electrically isolated. They typically consist of an LED on the input side and a photosensitive device – such as a phototransistor, diode array, or triac – on the output. From relay sockets to pluggable relay and optocoupler modules – WAGO delivers versatile, high-performance solutions for every application. With the industrial automation market projected to grow significantly in 2025, the demand for reliable circuit isolation has. There are many different applications for optocoupler circuits, so there are many different design requirements, but a basic design for an optocoupler providing isolation for example between two circuits, simply involves the choice of appropriate resistor values for the two resistors R1 and R2.

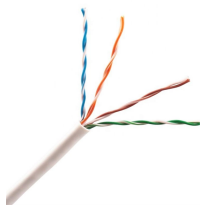
What are the different models of modules with optocouplers



Optocouplers play a crucial role in many circuit designs, offering electrical isolation and reliable signal transfer. You'll find them in projects ranging from simple relay modules to advanced ...



Single, dual, and linear optocouplers made by Littelfuse can be paired with shunt resistors to adjust the current required to activate the devices. We also offer solid ...



The above figures explain a couple of unique customized optocouplers modules which could be used for speed counter or RPM measurement applications. The first concept shows a ...



We have a specialized portfolio of fixed-mount optocouplers for railway applications and shipbuilding. Thanks the wide variety of different versions, they are ideal for niche applications.



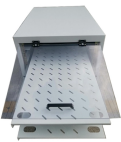
Optocouplers are mainly used for signal isolation, while SSRs are used for switching applications, offering faster switching speeds and longer lifespans compared to mechanical relays.



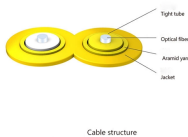
This article will walk you through exactly what optocouplers are, how they work, the different types available, and how to choose the perfect one for your project.



Each logic family (e.g. LSTTL or CMOS types) may have different logic voltage levels and different input and output current requirements, and optocouplers can provide a convenient way of interfacing two ...



Optocouplers play a crucial role in many circuit designs, offering electrical isolation and reliable signal transfer. You'll find them in projects ranging ...



In order to design a functionally robust and reliable application with optocouplers, it is essential to understand not only the device's main parameters and parasitic elements, but also their tolerances ...



Optocouplers are electronic components which use light waves to provide electrical isolation while transferring an electrical signal. They are sometimes known as opto-isolators, photocouplers, or ...



Optocouplers play a crucial role in providing electrical isolation between circuits, preventing interference, and protecting sensitive electronics. They can be grouped into phototransistor types, Darlington ...



Single, dual, and linear optocouplers made by Littelfuse can be paired with shunt resistors to adjust the current required to activate the devices. We also offer solid state relay-optocoupler modules that ...

Contact Us

For more information, pricing, or custom solutions, please contact us:

Website: <https://www.samastersbaseball.co.za>

Email: sales@samastersbaseball.co.za

Phone: +27 63 874 2095

Address: 15 Innovation Drive, Technopark, Stellenbosch, 7600, South Africa

This document is for informational purposes only. Specifications subject to change without notice.

