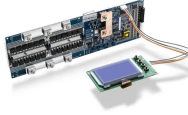


Voltage of Three-Line Laser Diode



Voltage of Three-Line Laser Diode



In high current applications, the voltage drop across this resistor, combined with the laser diode forward voltage, makes direct connection between the laser and the driver impractical in a 3 V system.



From the diagram it can be seen that the voltage across the laser diode is typically around 1.5 volts, although it is necessary to check the specification for the particular laser diode in being considered.



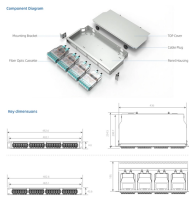
To turn it on, you just need to connect the correct voltage with plus to the red wire and minus to the black wire. The exact voltage you need depends on your module. The seller should be ...



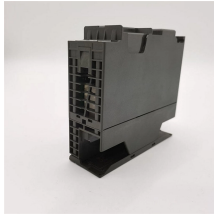
Driven by voltage, the doped p-n-transition allows for recombination of an electron with a hole. Due to the drop of the electron from a higher energy level to a lower one, radiation is generated in the form ...



High-speed voltage limits provide critical protection for the laser (see Fig. 1). When the voltage limit is exceeded, the laser driver should power down immediately.



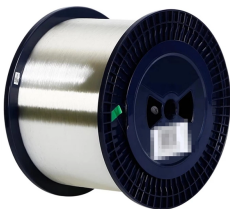
To turn it on, you just need to connect the correct voltage with plus to ...



The purpose of this laser diode tutorial is to provide the information necessary to create a long lifetime, stable laser diode system. Much of what will be discussed will be in general terms of laser diode ...



Electrostatic damage to a laser diode is often a result of a current surge resulting from a static electrical discharge generated by a human body or a spike voltage associated with switching ...



Most of these modules expect to be provided 3 volts, and they draw about 40mA. If you want to run a laser module from a 6V supply or battery, you can put a resistor in series with it, of ...



ISL58315 The ISL58315 is a high-speed, triple-output laser diode driver (LDD) for laser scanning projector systems, which require three

Contact Us

For more information, pricing, or custom solutions, please contact us:

Website: <https://www.samastersbaseball.co.za>

Email: sales@samastersbaseball.co.za

Phone: +27 63 874 2095

Address: 15 Innovation Drive, Technopark, Stellenbosch, 7600, South Africa

This document is for informational purposes only. Specifications subject to change without notice.

