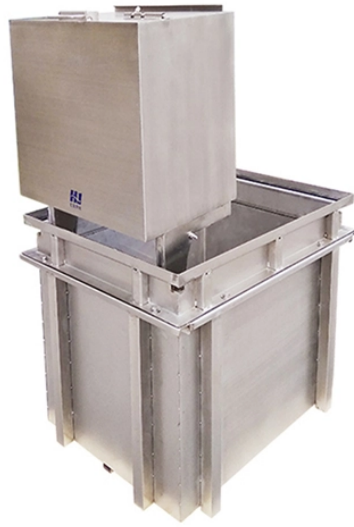


Vertical connection to horizontal cable tray



Vertical connection to horizontal cable tray



Cable tray length is selected based on the load to be supported, the distance between the supports (also referred to as the span), and handling and installation constraints.



This system allows for very little horizontal adjustment of the tray once the vertical hangers are in place. It is essential that these hangers be positioned properly.



When installing cable tray support brackets horizontally, it is crucial to ensure proper spacing and alignment to meet the specific cable tray system's requirements. ...



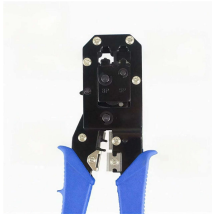
Discover the essential cable tray spacing requirements for safe and efficient installation. Learn key standards, horizontal and vertical spacing, and more.



WBTFORM was pioneered as the only insert to offer the flexibility to simply roll into the tray bottom, and now WBTFORM can cover both vertical sides and bottom to totally encapsulate and protect cabling ...



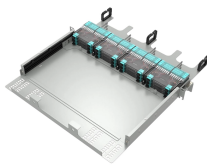
When installing cable tray support brackets horizontally, it is crucial to ensure proper spacing and alignment to meet the specific cable tray system's requirements. Vertical installation, on the other ...



Each tray section should be bonded to an adjoining section using listed bonding jumpers or a continuous ground wire and clamps (such as a copper ground bolt). Powder coated tray requires the removal of ...



Hubbell's NEXTFRAME® Ladder Tray is the effective and widely used cable runway that supports and delivers bundles of cable between cabinets, racks, and closets, along walls, and suspended from ...



Vertical vs Horizontal vs Compound Offset
Depending on the layout of your facility, your cable tray will need to maneuver in different directions to avoid clashes: Vertical Offsets: Route the tray up toward ...



Cable tray should not be laid directly on the floor or roof. It should be mounted far enough off the floor or roof to allow the cables to exit through the bottom of the cable tray.



The main cable tray backbone will be installed in the building's four-story shaft. From it, a dedicated floor cable tray will branch out at each level. ...



Connectors VERTICAL TEES ... HORIZONTAL TEES
Horizontal Tee / 90° Connector for Center Hung
cable tray.



This guide covers the critical steps, from selecting
the right electrical cable tray and performing
accurate cable fill calculations to managing a safe
cable pull through and ensuring all bonding and
grounding ...

Contact Us

For more information, pricing, or custom solutions, please contact us:

Website: <https://www.samastersbaseball.co.za>

Email: sales@samastersbaseball.co.za

Phone: +27 63 874 2095

Address: 15 Innovation Drive, Technopark, Stellenbosch, 7600, South Africa

This document is for informational purposes only. Specifications subject to
change without notice.

