

# **Upgraded Canadian Benchtop Insertion Loss Analyzer Available Now**



## Upgraded Canadian Benchtop Insertion Loss Analyzer Available Now



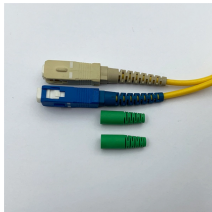
Joinwit Optoelectronic Technical Co., Ltd was established in 1998. It is a well-respected manufacturer which specializes in designing, R& D, manufacturing and ...



STC-MFIRL4201 (MPO/MTP) mandrel free insertion loss test station is specially design for multi fiber testing. It realized mandrel free return loss measurement on the multi fiber, and without matching gel ...



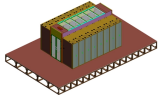
The ILM-100 was designed to measure insertion loss on fiber optic components quickly and accurately.



Upgrade your fiber optic testing toolkit with our Single-Mode Single-Channel Insertion & Return Loss Tester. Experience unmatched precision, ease of use, and versatility.



We are delighted to announce that Vanity Fashions, a forward-thinking supplier of fashion jewelry from Nova Scotia, has recently acquired the ELVATECH Jewelry Lab; a benchtop XRF analyzer ...



Realize multi-core non-winding return loss test without end matching. Automatically complete the 12-core (24-core) dual-wavelength IL& RL test. The application of OTDR winding-free technology has ...



The HL5220 Signal Path Analyzer™ measures TDR, TDT, return loss, and insertion loss in high-speed interconnects, cables, and PCB traces with a fast 200 ps rise time and ESD robustness.



JW8307AL series of No-mandrel Insertion loss & return loss tester is a classic and updated version of JW8307 No-mandrel return loss tester. The new design is equipped with higher light stability, return ...



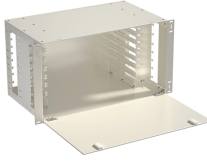
Wiltron 562 is a Scalar Network Analyzer that is used to Measure insertion loss, insertion gain, or RF power with 76dB dynamic range over the 10MHz to 40GHz frequency range. Buy, sell, rent, or repair ...



The QbD1200+ TOC Analyzer features a digital non-dispersive infrared sensor (NDIR) with auto-correct drift to ensure long-term stability. It delivers reliable and reproducible results with control of the UV ...



ZIVA-IRL3201 is a high performance loss test station that is designed specially for Optical Passive Components production Test and Lab Test. It combines three different working modes as a return ...



The final measurement module in the PCT family is the mIL-A2 MAP multi mode insertion loss meter which is a powerful, stable, and compact IL-only solution. One single-slot module contains two LED ...

## Contact Us

For more information, pricing, or custom solutions, please contact us:

Website: <https://www.samastersbaseball.co.za>

Email: [sales@samastersbaseball.co.za](mailto:sales@samastersbaseball.co.za)

Phone: +27 63 874 2095

Address: 15 Innovation Drive, Technopark, Stellenbosch, 7600, South Africa

This document is for informational purposes only. Specifications subject to change without notice.

