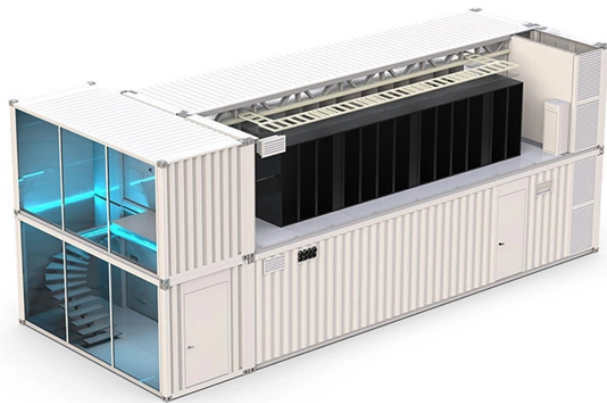


## US Mobile Cable Tray Installation



## US Mobile Cable Tray Installation



Our solutions and products are made in the USA and our service and support can assist with any install or product selection questions that you may have. This Installation guide covers the most popular ...



Step-by-step on-site guide: learn how to plan, mark, support, and install cable trays correctly, from shop drawing approval to final checks.



Welcome to our step-by-step guide on installing cable trays! In this video, we'll explore the different types of cable trays available and provide ...



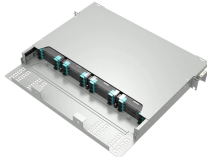
Whether you're building a commercial setup or upgrading an industrial plant, proper cable tray installation ensures neat wiring, safe access, and easy maintenance. But before you lay the first tray ...



Proper planning for installing cable tray includes calculations based on loading, support systems, cable/wire fill and spacing, conductor types, securing of the cables and wire, and proper grounding ...



Cable tray length is selected based on the load to be supported, the distance between the supports (also referred to as the span), and handling and installation constraints.



Cablofil is the global gold standard for total cable management. Explore the one-stop shop for innovative, fast, and dependable cable management systems including wire mesh tray, ladder cable ...



Welcome to our step-by-step guide on installing cable trays! In this video, we'll explore the different types of cable trays available and provide detailed instructions for their...



Some of these criteria include the required load that the cable tray must support, the distance between the cable tray supports, and ease of handling and installation.



Atkore's US Tray was established in 2012, as an American manufacturer of made-to-order cable trays that are built per NEMA standards and certified by UL. We offer modern, innovative, and technically ...



The placement of cables, ducts, and conduits can be done using cable trays - for both outside plant (OSP) and interior spaces (ISP). This allows cables and ducts to be installed quickly and readily ...



Channel cable tray secures cables using Eagle Basket pre-punched holes. New pre-punched holes allow the secure attachment of cables to the inside of the channel ...



Wire mesh cable trays are lined with wire mesh and may be cut or bent to accommodate custom installations. Fast installation with dependable support. Everything you need to build a cable ...

## Contact Us

For more information, pricing, or custom solutions, please contact us:

Website: <https://www.samastersbaseball.co.za>

Email: [sales@samastersbaseball.co.za](mailto:sales@samastersbaseball.co.za)

Phone: +27 63 874 2095

Address: 15 Innovation Drive, Technopark, Stellenbosch, 7600, South Africa

This document is for informational purposes only. Specifications subject to change without notice.

