

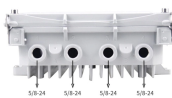
U9 network cabinet network cable



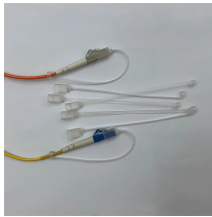
U9 network cabinet network cable



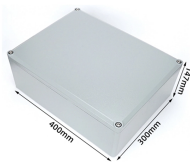
This network enclosure is designed to accommodate standard 19 inch rack mounted devices, making it a versatile choice for various network applications. With internal dimensions suitable for a range of ...



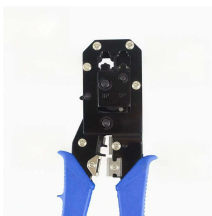
This SmartRack® 9U rack enclosure is designed for home and office network wiring closets, retail locations, classrooms, back offices and other areas with limited floor space where you need ...



This SmartRack® 9U rack enclosure is designed for home and office network ...



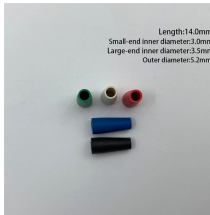
VEVOR 9U Wall Mount Network Server Cabinet, 15.5" Deep, Server Rack Cabinet Enclosure, 200 lbs Max. Ground-Mounted Load Capacity, with Locking Glass Door Side Panels, for IT Equipment, A/V ...



Removable top and bottom cable management panels offer easy cable routing. Adjustable rails, silk-screened rack unit measurements and square rack holes allow for easy installation of equipment.



Our 9U racks are designed with durability, efficient airflow, and user-friendly cable management in mind, ensuring that your IT setup remains organized and secure.



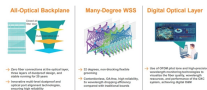
Explore 9U network racks for secure equipment organization. Find wall-mount and open-frame options with locking doors, cooling fans, and cable management.



2-Post 9U RACK CABINET: Wall-Mount Server Rack with a maximum mounting depth of 15.0" (38.0cm) is ideal for installing network switches, patch panels and other rackmount equipment in your ...



2-Post 9U RACK CABINET: Wall-Mount Server Rack with a maximum mounting ...



Source 9U Wall Mount Network Rack, structured cabling products from one OEM/ODM partner—CRXCabling supplies copper, fiber, LAN cable and accessories so you can standardize, cut ...



The NavePoint Pro Series 9U 450mm network cabinet does the job for offices and retail environments that require a secure, heavy-duty wall-mounted storage option for standard 19" rack-mount servers ...



FS wall mount network cabinet consists of convenient cable access openings, top cooling vents, vented glass front door, lockable/removable side panels and 4 vertical posts. It is designed to house ...



The NavePoint Pro Series 9U 450mm network cabinet does the job for offices and retail environments that require a secure, heavy-duty wall-mounted storage ...

Contact Us

For more information, pricing, or custom solutions, please contact us:

Website: <https://www.samastersbaseball.co.za>

Email: sales@samastersbaseball.co.za

Phone: +27 63 874 2095

Address: 15 Innovation Drive, Technopark, Stellenbosch, 7600, South Africa

This document is for informational purposes only. Specifications subject to change without notice.

