

Two 45° bends in the cable tray



Two 45° bends in the cable tray



Cable Tray Fitting, 90° Junction Kit. Material: Carbon Steel. Finish: Electroplated Zinc. Includes: (1) Hardware for (1) Tee (2) 90° Bends.



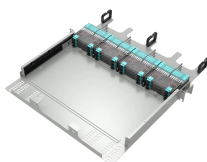
Calculate the minimum required bend radius by multiplying the cable's outside diameter by its bending factor (e.g., 10x for multicore). Then, select a standard tray fitting (300mm, 450mm, etc.) that ...



Home Wire & Cable Management T& B Cable Tray Bend for cable tray View Larger Representative Image



We offer a variety of cable tray flat bends available for light, medium, and heavy duty cable tray systems in varying sizes to suit your requirements.



Specifications Country of Origin: United States - Subject to change Type: Inside Cover Cable Tray Elbow Material: 18 ga Stainless Steel Finish: Smooth Brushed Siderail Height - nominal: 2 in. Width: 2 in. ...



Heavy Duty 90 Degree Flat Bend 150mm £ 34.96 ex. VAT - £ 41.95 inc. VAT Heavy Duty 90 Degree Flat Bend 150mm Galvanised £ 37.21 ex. VAT - £ 44.65 inc. VAT Heavy Duty 90 Degree Flat Bend ...



HellermannTytonGÇÖs low voltage raceway (TSR) is a one piece, non-metallic, adhesive backed, latching raceway designed to aesthetically organize and route communications wires, including high ...



The document provides instructions for forming various bends and joints in electrical trunking and cable trays. It describes: 1) How to mark and cut a right-angle ...



Hi Would someone kindly let me know the formula to create a flat 45 in say 100 mm cable tray for example. So I can then use the formula on different cable tray sizes and to different angles. ...



Wire Basket Overhead Cable Tray Routing System contributes to effective space utilization and network performance, and it provides speed of deployment, structural integrity, cable protection, and ease of ...

Contact Us

For more information, pricing, or custom solutions, please contact us:

Website: <https://www.samastersbaseball.co.za>

Email: sales@samastersbaseball.co.za

Phone: +27 63 874 2095

Address: 15 Innovation Drive, Technopark, Stellenbosch, 7600, South Africa

This document is for informational purposes only. Specifications subject to change without notice.

