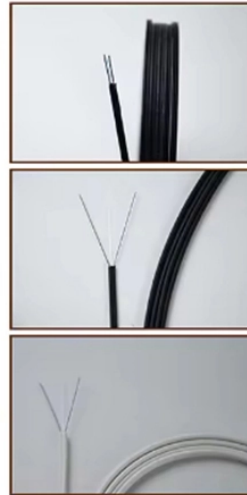


## Three-level distribution box enclosure and door



## Three-level distribution box enclosure and door



The nVent HOFFMAN Power System is specifically developed for power distribution panels for indoor applications, and is based on wall mounted and floor standing enclosures which makes the system ...



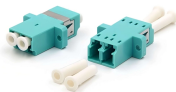
Hammond Manufacturing's C3R HCLO series of painted galvanized steel enclosures offer NEMA Type 3R protection against the elements and make ideal junction and wiring boxes. Galvanized steel ...



The Optional 3.0 mm galvanized plate and the high strength mounting plate bracket ensure the reliability of the installation device (can use for wiring outside the ...



Our catalog features a wide selection of standard stock electrical enclosures; in addition, we also specialize in manufacturing both fully custom and customized standard enclosures.



Custom distribution box enclosures engineered for secure electrical protection. Designed for waterproof performance and long-term reliability in industrial settings.



These metal enclosures are provided with a transparent door made of polycarbonate. These viewing windows enable operators and technicians to easily read and monitor the internal installed control ...



A three phase distribution box safely distributes and protects power for large equipment in factories, buildings, and high-demand commercial settings.



Distribution Box & Enclosure Power distribution box is designed to manage electrical power load and distribution. They are installed inside residential as well as ...



Nader NDP3A concealed distribution box series is applicable to indoor AC 50Hz or 60Hz, rated working voltage up to 440V, generally not exceeding 35 °C and ...



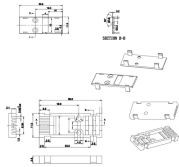
BF-U-3S...-D125 Setup of the distribution board is based on a 3-step principle (wall pan / mounting insert + DIN frame + door) 2 to 7 rows, 24 MUs / row 4 to 7 rows, 33 MUs / row Protection class I



Consult the factory for your special requirements. Dimensions are in inches. Millimeters shown are for reference only. Data subject to change without notice. Knockouts are standard on cabinets 24 inches ...



The door along with the curved edges and compact proportions enhance the aesthetics of the Load Center and provide an elegant and modern look. The hidden hinges and screws used in the Load ...



Engineering and manufacturing switchgear and industrial electrical enclosures and wireways since 1967. View our complete line of standard NEMA 1, 3R, 4 & 4X enclosures made from aluminum, carbon, ...



Convenient transparent door Durable IK09 enclosure Quick surface-mounted installation Suitable for indoor and outdoor environments Universal application Reliable long-term operation Disadvantages ...

## Contact Us

For more information, pricing, or custom solutions, please contact us:

Website: <https://www.samastersbaseball.co.za>

Email: [sales@samastersbaseball.co.za](mailto:sales@samastersbaseball.co.za)

Phone: +27 63 874 2095

Address: 15 Innovation Drive, Technopark, Stellenbosch, 7600, South Africa

This document is for informational purposes only. Specifications subject to change without notice.

