

The most powerful laser diode



The most powerful laser diode



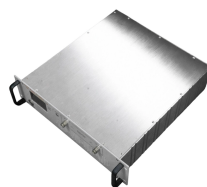
HL40213MG is a high-performance violet laser diode developed by Ushio. Operating at a wavelength of 405 nm, it delivers an optical output power of 400 mW (CW), positioning it as one of the most ...



Compact and powerful laser diode array modules featuring a T6 building block design with integrated cooling and electrical manifold. These modules deliver up to 1 megawatt of output power, ideal for ...



In his endless quest for more optical power, happened upon a paper describing a simple driver circuit that can dump massive amounts of current into a laser diode to produce far more...



At 3.2 million watts, the Lawrence Livermore National Laboratory laser diode array is the most powerful ever built, and will form part of an even larger quadrillion watt femtosecond pulsed ...



In the past year, we have acquired a lot of different laser engravers. On this website, through many posts, we have tested all of them, and we saw that between the machines, the cutting ...



High power laser diodes (>10 Watts) are available at wavelengths from the near infrared through roughly the 2000nm region. The most common devices are in the range of 808nm through 980nm.



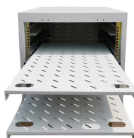
Lawrence Livermore National Laboratory (LLNL) has installed and commissioned the highest peak power laser diode arrays in the world, representing total peak power ...



The Ortur Laser Master 3 continues to be a top choice for beginners and budget-conscious users who want an easy-to-use yet capable diode laser. While typically in the 10W-20W ...



Lawrence Livermore National Laboratory (LLNL) has installed and commissioned the highest peak power laser diode arrays in the world, representing total peak power of 3.2 megawatts (MW).



In the past year, we have acquired a lot of different laser engravers. On this website, through many posts, we have tested all of them, and we saw that ...



Find the right laser diode with just a few clicks. Just select your specifications in the search mask and you get an instant overview of all the laser diodes that meet your requirements.



In December of 2024 Ushio started sample shipments of the HL40213MG, a single-mode laser diode (LD) with the industry's highest optical output power of 400mW in the 405nm wavelength ...

Contact Us

For more information, pricing, or custom solutions, please contact us:

Website: <https://www.samastersbaseball.co.za>

Email: sales@samastersbaseball.co.za

Phone: +27 63 874 2095

Address: 15 Innovation Drive, Technopark, Stellenbosch, 7600, South Africa

This document is for informational purposes only. Specifications subject to change without notice.

