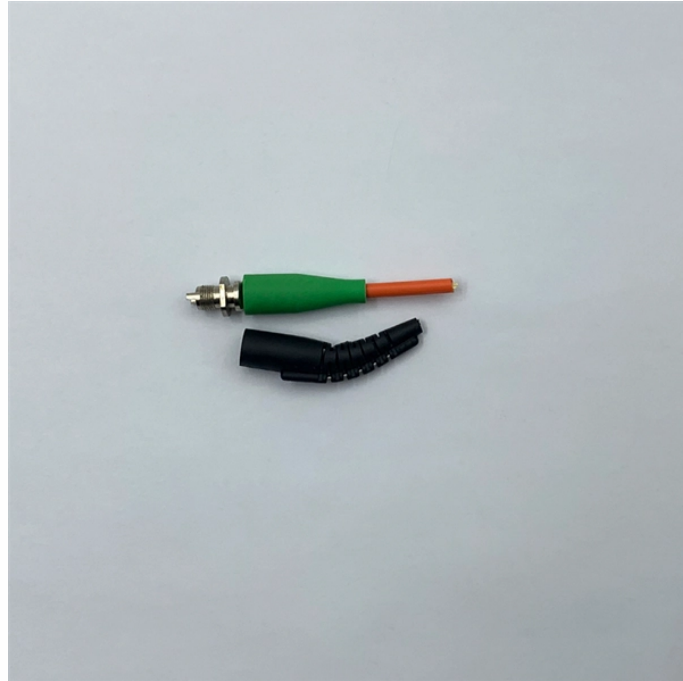


The first long-period fiber grating



The first long-period fiber grating



First City Credit Union in Los Angeles County CA offers checking and savings accounts, mortgages, loans, and more. Explore our products and services today.



Abstract: We report here for the first time the fabrication and characterisation of long period fiber gratings with periods of several millimetres. The resonant loss peaks of these gratings ...



This paper presents a review of the evolution of LPFGs, with a specific focus on the progression and current trends of mechanically induced long-period fiber gratings.



As the nation's largest privately owned bank, we offer strong, stable and private banking — centered on long-term relationships that are built around you.



With a 100-year history of family ownership, First Bank offers premier business banking, commercial banking, and personal banking solutions to clients in Missouri, California, Illinois and mortgage ...



Decades have passed since the first demonstration of a long-period fiber grating (LPFG) and its practical application for sensors, and, in this period, manufacturing techniques, sensitivity ...



We will never call and ask for your credentials, account numbers, ask you to transfer funds or buy gift cards. Hang up & call us at 877-322-9530. Forgot? First time user? Enroll now.



From everyday banking to advanced financial planning, we tailor solutions to support what's next. While we're one of the nation's largest banks, we remain family-led and guided by a simple belief—banking ...



Contact First City Credit Union in Los Angeles County CA for financial needs and inquiries. Contact us by phone, visit a credit union near your or email.



What is a Fiber Bragg Grating? A fiber Bragg grating is a periodic or aperiodic perturbation of the effective refractive index in the core of an optical fiber (see Figure 1). Typically, the perturbation is ...



In this paper, we present a method to fabricate long period gratings in standard telecommunications single mode fibers (SSMF), using a femtosecond laser system.



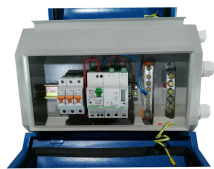
Long period fiber gratings produced by the electric arc technique have found an increasing interest by the scientific community due to their ease to fabricate, virtually enabling the ...



A long-period fiber grating couples light from a guided mode into forward propagating cladding modes where it is lost due to absorption and scattering. The coupling from the guided mode to cladding ...



The meaning of FIRST is preceding all others in time, order, or importance. How to use first in a sentence.



The strain response of a long-period fibre grating arise due to the physical elongation of the fibre, changing the grating pitch and the effective refractive index of the core and cladding due to the ...



Traditionally, long period fiber gratings (LPG) are made in passive optical fibers that have negligible loss. However, loss or gain that can be controlled via optical pumping adds a new degree of freedom and ...



About the Business First Bank in Los Angeles, CA, is a full-service, family-owned bank with a variety of business, family business, and personal banking services. Bank virtual, online, or in-person....



Contact us online or visit one of our branch offices to start your relationship with First Bank, where we offer banking, personalized. We make banking easy. Easily add your First Bank debit card to your ...



In this work, we reviewed the most important achievements of INESC TEC related to the fabrication of long-period fiber gratings using the electric arc technique.



Explore personal and business banking, loans, and digital tools backed by local service and community commitment.

Contact Us

For more information, pricing, or custom solutions, please contact us:

Website: <https://www.samastersbaseball.co.za>

Email: sales@samastersbaseball.co.za

Phone: +27 63 874 2095

Address: 15 Innovation Drive, Technopark, Stellenbosch, 7600, South Africa

This document is for informational purposes only. Specifications subject to change without notice.

