

## The distribution box needs rain protection



## The distribution box needs rain protection



Protect your outdoor electrical connections from rain, snow, sun & dust with our durable, UL Listed Daier outdoor junction boxes. Find the perfect size & style for outlets, switches, lights & timers.



Waterproofing of outdoor electrical boxes is critical to protecting electrical components from moisture and ensuring safety. Here is a step-by-step guide on how to waterproof an outdoor ...



Protection level: IP66, ensuring that the distribution box is effectively waterproof and dustproof in harsh outdoor environments. Impact protection level: IK09, providing ...



Choose a waterproof electrical box with a high IP rating, like IP66 or IP67, for reliable protection against heavy rain and humidity. Regularly inspect seals, gaskets, and cable entries to ...



EMI designs and fabricates NEMA 3R rated outdoor electrical enclosures for power distribution units (PDUs) and switchgear to protect your ...



Low voltage distribution box outdoor use requires IP65 or NEMA 4X ratings, corrosion-resistant materials, and proper sealing for lasting weather protection.



Learn how to waterproof outdoor electrical boxes with practical tips on enclosure selection, sealing, installation, and maintenance.



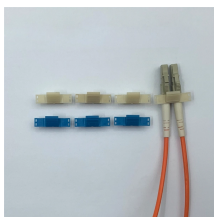
A weatherproof db box serves as a critical electrical distribution component designed to house and protect electrical connections, switchgear, and distribution boards from harsh environmental conditions.



Learn what an outdoor electrical junction box is, NEC 314 requirements, types like pull boxes and splice boxes, proper sizing rules, and when you need weatherproof protection.



Built for outdoor reliability, each waterproof distribution box in our AT & HT range balances sealing, materials, and serviceability—so your projects stay safe and ...



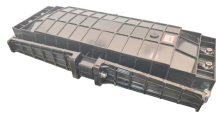
EMI designs and fabricates NEMA 3R rated outdoor electrical enclosures for power distribution units (PDUs) and switchgear to protect your electrical equipment from rain, dust, wind, ...



When you install a waterproof distribution box outdoors, you reduce the risk of short circuits and corrosion. This protection is essential for industrial and commercial applications, where ...



Recent trends show a surge in outdoor installations due to the growing need for dependable electrical distribution in unpredictable environments. Unlike standard indoor panels, ...



A distribution box is considered “weatherproof” when it effectively safeguards electrical components from various environmental elements including rain, dust, snow, and UV exposure.



A powder-coated die-cast aluminum box works well in rain, snow, and extreme temperatures. Always check for clear IP ratings, such as IP65 or IP67, to make sure the box is waterproof.

## Contact Us

For more information, pricing, or custom solutions, please contact us:

Website: <https://www.samastersbaseball.co.za>

Email: [sales@samastersbaseball.co.za](mailto:sales@samastersbaseball.co.za)

Phone: +27 63 874 2095

Address: 15 Innovation Drive, Technopark, Stellenbosch, 7600, South Africa

This document is for informational purposes only. Specifications subject to change without notice.

