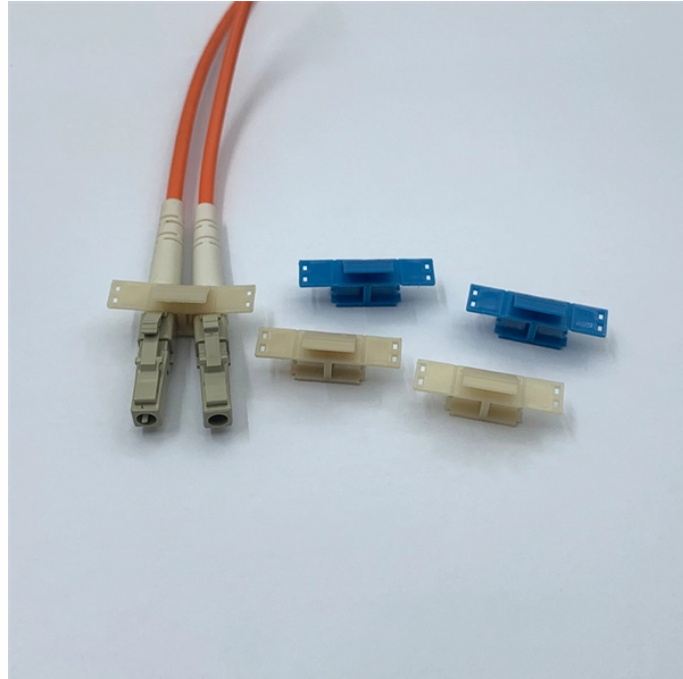


Teaching how to wire a primary distribution box

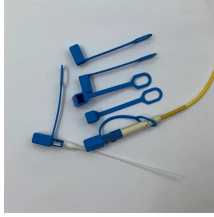


Overview

This video shows real on-site footage of electrical installation, demonstrating safe and standardized wiring methods used by professionals. Location determination: Determine the installation position of the circuit breaker according to the position of the. Mark and Drill: Confirm the installation place (the method is above) and mark on the wall or installation surface with a marking pen. It is usually equipped with circuit breakers, fuses, terminal connectors, and other components. Whether you're a professional or a DIY enthusiast, understanding the correct procedure can prevent accidents and ensure optimal performance. This guide provides step-by-step. In this video, we'll walk you through the process of wiring a home distribution box with a detailed connection diagram. What is Distribution Board?

Distribution board.

Teaching how to wire a primary distribution box



Reliable cable distribution boxes ensure safe, efficient power management for residential, commercial, and industrial systems. Learn installation and safety tips.



The diagram of the distribution board's wiring shows exactly how each circuit is wired and connected. It also includes any additional components, such as smoke detectors or surge ...



First of all, you need to have a simple understanding of the definition of a distribution box, and make it clear which kind of distribution box you want to install. This is important to properly install it.



Learn how to install a distribution box safely and correctly. Covers wiring, placement, standards, and expert tips for a compliant setup.



Find out how to properly wire an electrical panel box with a comprehensive diagram and step-by-step instructions.



Learn how to connect a distribution box with this easy-to-follow, step-by-step guide. From tools and materials needed to common installation mistakes and solutions, this comprehensive article will ...



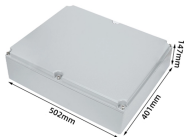
Hey, in this article we are going to see the Single Phase Distribution Box Wiring Diagram and Connection Procedure. A distribution board or distribution box is where the main power supply is ...



Learn how to wire a distribution box step by step! This video shows real on-site footage of electrical installation, demonstrating safe and standardized wiring methods used by...



Wiring Direction: Wiring between the main circuit breaker and each branch circuit breaker in the box generally goes on the left, and the wiring out of the distribution box generally goes on the ...



In this video, we'll walk you through the process of wiring a home distribution box with a detailed connection diagram. Whether you're an electrician or a DIY enthusiast, this guide will help you ...

Contact Us

For more information, pricing, or custom solutions, please contact us:

Website: <https://www.samastersbaseball.co.za>

Email: sales@samastersbaseball.co.za

Phone: +27 63 874 2095

Address: 15 Innovation Drive, Technopark, Stellenbosch, 7600, South Africa

This document is for informational purposes only. Specifications subject to change without notice.

