

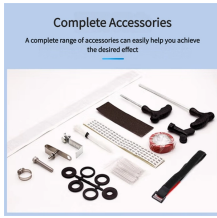
Switching a PoE switch to a regular switch



Overview

In summary, you can use a PoE switch as a regular switch, but it is not recommended to use a PoE switch as a regular switch. A PoE switch gives power to devices that support the protocol, like cameras and access points. So, let's look at the differences between these two! When designing or upgrading a network, one important decision is choosing between a PoE switch and a normal (non-PoE) switch. While both serve the same basic function of connecting network devices, a PoE switch offers built-in Power over Ethernet (PoE) capabilities that can significantly simplify. Power over Ethernet (PoE) Switch are at the core of the modern-day network configurations, to enable an effortless integration of both the power and data channels. In this article we will uncover the subject matter of PoE switches and watch how they are necessary for the network design.

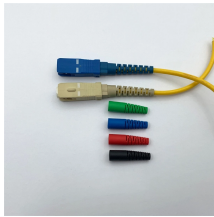
Switching a PoE switch to a regular switch



While a regular switch only transmits data, a PoE switch can supply power to compatible devices like IP cameras or access points without requiring separate power sources.



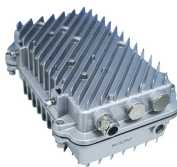
A POE switch gives power to devices that support the protocol, like cameras and access points. A regular switch, on the other hand, merely supplies the internet signal. PoE switch and regular switch ...



This article clearly outlines the differences between PoE switches and normal switches, highlights their advantages, and helps you decide which one suits your needs.



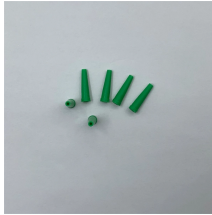
As a leading PoE switch manufacturer, we explain how to safely use a PoE switch as a normal switch, saving on cabling & future-proofing your network. Get expert insights & OEM quotes.



In Summary, PoE switches can be used as Non-PoE switches, but it is not recommended to do it, which will largely waste the powerful functions of PoE switches. In addition, the cost of PoE switches is ...



On this page you will learn what differentiates a PoE enabled switch from a regular LAN switch, when you should use a PoE switch versus a PoE injector and, what exactly is PoE (Power ...



This article clearly outlines the differences between PoE switches and normal switches, highlights their advantages, and helps you decide which one ...



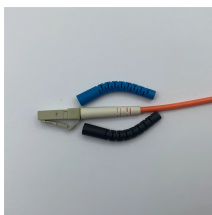
Power over Ethernet (PoE) Switch are at the core of the modern-day network configurations, to enable an effortless integration of both the power and data channels. In this article ...



Two of the most common types of switches are standard Ethernet switches and Power over Ethernet (PoE) switches. Understanding the differences between these two types can help you ...



Power over Ethernet (PoE) Switch are at the core of the modern-day network configurations, to enable an effortless integration of both the power and ...



PoE switches and regular switches are both network devices that can transmit data, but what is the difference between the two? The following article will compare PoE switches and normal ...

Contact Us

For more information, pricing, or custom solutions, please contact us:

Website: <https://www.samastersbaseball.co.za>

Email: sales@samastersbaseball.co.za

Phone: +27 63 874 2095

Address: 15 Innovation Drive, Technopark, Stellenbosch, 7600, South Africa

This document is for informational purposes only. Specifications subject to change without notice.

