

Swedish Explosion-proof Inspection Box Distribution Box



Swedish Explosion-proof Inspection Box Distribution Box



What drives the market growth in Sweden? Sweden's investment in mining, defense, and specialty chemical manufacturing drives demand for advanced safety-certified distribution boxes.



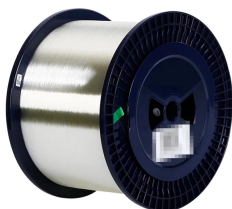
Terminal boxes has plenty of connection space. The boxes have a knock-out FL13 on the upper and lower sides. The connectable area is 25 mm² and earth max 16 mm². Protection class IP44.



Atex control stations, explosion protected control units and distribution boxes made stainless steel maritime grade AISI 316L or AISI 304L. Atex Delvalle provides a custom build facility for Hazardous ...



The modular combination between the cavities, the explosion-proof chambers are not connected to each other, reducing the net volume of the single cavity, thereby eliminating the overlap of the explosion ...



This combination of versatility, durability, and compliance with international explosion protection standards—such as IECEx, ATEX, NEC, and others—makes them a preferred choice for a wide ...

Contact Us

For more information, pricing, or custom solutions, please contact us:

Website: <https://www.samastersbaseball.co.za>

Email: sales@samastersbaseball.co.za

Phone: +27 63 874 2095

Address: 15 Innovation Drive, Technopark, Stellenbosch, 7600, South Africa

This document is for informational purposes only. Specifications subject to change without notice.

