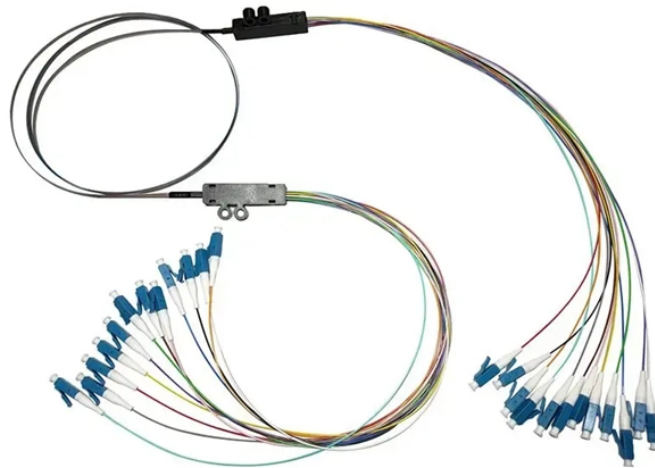


Standards for Laying Cable Trays



Overview

The National Electrical Manufacturers Association (NEMA) also publishes three consensus standards that apply to the proper manufacture and installation of cable trays: ANSI/NEMA-VE 1-1998, Metal Cable Tray Systems; NEMA-VE 2-1996, Metal Cable Tray Installation Guidelines; and. The National Electrical Manufacturers Association (NEMA) also publishes three consensus standards that apply to the proper manufacture and installation of cable trays: ANSI/NEMA-VE 1-1998, Metal Cable Tray Systems; NEMA-VE 2-1996, Metal Cable Tray Installation Guidelines; and. This standard specifies the requirements for nonmetallic cable trays and associated fittings designed for use in accordance with the rules of the Canadian Electrical Code (CEC) Part 1, and the National Electrical Code® (NEC). Covers construction and test requirements for. association representing the major electrical equipment manufacturers in the U. The Cable Tray ng standards, performance standards, test standards and application in this document have been tested extensively competent professional en completely installed, without damage either to conductors or. Cable tray (or cable ladder) systems are a popular alternative to electrical conduit systems, as they have an outstanding record

for dependable service, design flexibility and cost savings in commercial and industrial applications. All illustrations, descriptions and technical information included in this document are provided as indications and can cable trays are equivalent. 305(a)(3), or comparable standards promulgated by States operating OSHA-approved State plans.

Standards for Laying Cable Trays



One of the most recognized frameworks globally is the IEC standard for cable tray systems. This standard ensures safety, durability, and performance across various environments. ...



How to Use the Cable Tray Fill Calculator Properly sizing your cable tray is critical for safety and compliance. Our free calculator helps you determine the correct tray size based on NEC and IEC ...



A generic guideline developed by the Cable Tray Institute indicates that cable trays should not be filled in excess of 40-50% of the inside area of the tray or of the tray's maximum weight based on the cable ...



Discover the essential cable tray spacing requirements for safe and efficient installation. Learn key standards, horizontal and vertical spacing, and more.



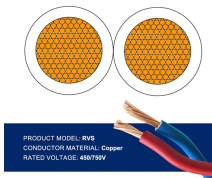
Our solutions emphasize mandatory grounding and bonding for metallic trays, firestop systems at penetrations, and mesh tray options that reduce installation time while maintaining ...



Cable tray support locations are defined by the NEMA VE-1 and VE-2 Manufacturing & Installation Standards, which specify the requirements for cable tray systems designed for use in accordance ...



The Cable Tray Institute is making available the current edition of this practical guide for the proper installation of aluminum or steel cable tray systems. These guidelines will be useful to engineers, ...



This guide covers the critical steps, from selecting the right electrical cable tray and performing accurate cable fill calculations to managing a safe cable pull through and ensuring all bonding and grounding ...



In designing supports for a cable tray system, consideration should be given to the loads associated with future cable additions and any additional loading that may be applied to the cable tray system (e.g., ...



NEMA VE 1-2017 Specifies requirements for metal cable trays and associated fittings designed for use in accordance with the rules of Canadian Electrical Code, Part I and the National Electrical Code®

Contact Us

For more information, pricing, or custom solutions, please contact us:

Website: <https://www.samastersbaseball.co.za>

Email: sales@samastersbaseball.co.za

Phone: +27 63 874 2095

Address: 15 Innovation Drive, Technopark, Stellenbosch, 7600, South Africa

This document is for informational purposes only. Specifications subject to change without notice.

