

Stainless Steel Ladder Cable Tray 100



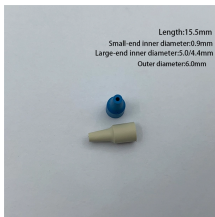
Stainless Steel Ladder Cable Tray 100



Discover what stainless steel is, how it's made, and its types, properties, and applications across industries. Learn how it resists corrosion and where it's used.



stainless steel, any one of a family of alloy steels usually containing 10 to 30 percent chromium. In conjunction with low carbon content, chromium imparts remarkable resistance to corrosion and heat.



The stainless steel cable tray is made of high quality SS 304 or SS 316 materials, which is corrosion and rust resistance. Additionally, the stainless steel cable tray is high strength and load capacity, which can ...



Explore the five main types of stainless steel. Learn about their unique properties, grades, and applications in various industries.



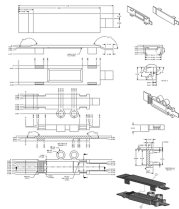
When it comes to 100 lb Cable Ladder Trays, you can count on Grainger. Supplies and solutions for every industry, plus easy ordering, fast delivery and 24/7 customer support.



There are a large number of cable tray fittings that are made compatible with each type of tray. These fittings help in maintaining support of the cable tray system. Shop Graybar's collection of cable tray ...



Husky Ladder Cable Tray systems consists of two longitudinal side members connected by individual transverse members, and is designed for use as a power cable or control cable support system.



Stainless steel is an alloy composed of iron and at least 10.5% chromium for corrosion resistance and durability. The chromium reacts with oxygen to form a thin, stable oxide layer that ...



About North American Stainless. North American Stainless, part of the Acerinox Group of companies, is situated on 1400 acres in Carroll County, Kentucky.



Stainless steel is used for industrial equipment when it is important that the equipment is durable and easy to clean. Stainless steel is an iron -based alloy that contains chromium, making it resistant to ...



Learn what stainless steel is, what it's made of, and how it works. Explore composition, types, properties, and real-world uses in this complete guide.

Waterproof and dustproof, reliable and safe
The outer classic sink design allows the sealing ring of the cabinet and door to be seamlessly compressed without leaving a trace of gaps



Stainless steel is one of the most-used materials in the world. Read on to learn more about the types, constituents, and uses of stainless steels.



Choose from our selection of ladder trays, including over 475 products in a wide range of styles and sizes. Same and Next Day Delivery.



Discover high-quality 100mm stainless steel cable tray designed for efficient cable management, offering durability and easy installation. Ideal for enhancing organizational systems in commercial settings.



Browse or download the Cable Tray catalog for more information on our line of cable tray and ladder systems. As the cost of structural steel continues to increase, the impact of reducing the quantity of ...



Refers to the approximate height of a cable tray used for specifying. Selecting a specific height will show cable trays with that height, as well as cable tray accessories compatible with that height.



Stainless steel is the generic name for a number of different steels used primarily for their resistance to corrosion. The one key element they all share is a certain minimum percentage (by mass) of ...



Stainless steel cable trays resist corrosion, rust, chemicals, UV, water, high temperature and any other severe conditions. Easy cutting and drilling with standard tools.



This article discusses the properties and applications of stainless steel grade 304 (UNS S30400).



Two stainless steel C-Channel profile side rails with transverse ladder rungs; provides the most rigid ladder tray system. Ideal for high vibration environments. C-Channel Swage Ladder trays are ...

Contact Us

For more information, pricing, or custom solutions, please contact us:

Website: <https://www.samastersbaseball.co.za>

Email: sales@samastersbaseball.co.za

Phone: +27 63 874 2095

Address: 15 Innovation Drive, Technopark, Stellenbosch, 7600, South Africa

This document is for informational purposes only. Specifications subject to change without notice.

