

Singapore Small Network Cabinet



Singapore Small Network Cabinet



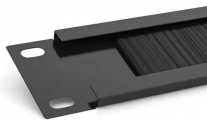
The 6U network cabinet features a removable and reversible front door and removable side panels, each with quick-release mechanisms, so you can easily access your equipment. Plus, each door and ...



Singapore - StarTech Server Racks offer durable construction that ensures a stable platform for valuable network and server equipment. Our wide range of server racks includes unique wallmount ...



Add to project list LEGRAND Nexpan REF. 446412 Server cabinet 19 inches with airflow management perforated doors capacity 42U 800x1000mm supplied without side panels Compare Add to project ...



FS floor standing cabinets provide an ideal server and network equipment storage solution for data centers, computer rooms or network facilities.



Wall mount data rack cabinets and desktop data cabinets are ideal for smaller network installations. Freestanding data cabinets tend to house a much higher number of network installations that require ...



Are you looking for a reliable data storage cabinet or server rack to accommodate your IP cameras and network equipment? Look no further! This article provides a comprehensive buying guide to help you ...



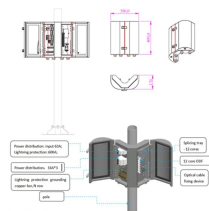
Choose 45cm depth if you have limited space, need to mount network equipment, and don't require deep servers. Choose 60cm depth if you need to house larger ...



Elevate your network infrastructure with our comprehensive Racks and Cabinets. Our solutions promise flexibility, scalability, and peak performance, laying the foundation for a connected future.



Panel SeT systems are built for durability, adaptability, and sustainability, making them the most reliable choice for your data centre, edge computing, and industrial IT requirements.



We have various size of server racks with solid quality: 6U, 9U, 12U, 15U, 18U, 22U, 32U, 42U. PDU and fans are included for server racks of 18U and above. Free delivery to the ground or lift accessible ...



Choose 45cm depth if you have limited space, need to mount network equipment, and don't require deep servers. Choose 60cm depth if you need to house larger servers, plan for future expansion, and ...



Whether you are fitting out a small office network, upgrading a retail outlet's IT setup, or simply optimising space in a constrained environment, choosing the right wall mount enclosure ...

Contact Us

For more information, pricing, or custom solutions, please contact us:

Website: <https://www.samastersbaseball.co.za>

Email: sales@samastersbaseball.co.za

Phone: +27 63 874 2095

Address: 15 Innovation Drive, Technopark, Stellenbosch, 7600, South Africa

This document is for informational purposes only. Specifications subject to change without notice.

