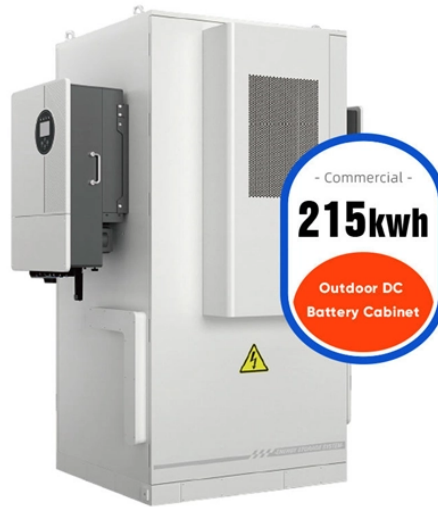


Sheet metal cabinet thickness



Sheet metal cabinet thickness



This guide covers the basics of choosing the right sheet metal thickness for your projects.



Learn how to choose the right sheet metal thickness. Understand gauge vs mm, material ranges, tolerances and design tips for stronger, cost-efficient fabrication.



Learn how to read a steel gauge chart, compare steel thicknesses, and choose ...



Learn how to read a steel gauge chart, compare steel thicknesses, and choose the right gauge for your project with clear explanations and conversions.



Below is our best attempt to capture all of the standard gauge thickness of different materials. Be sure to check with your supplier when purchasing steel what your actual thickness is going to be, especially ...



Choosing the right thickness of cabinet sheet metal is a balancing act. You need to consider all the factors we've discussed, including usage, weight capacity, environmental conditions, and the type of ...



This article presents a brief summary of common sheet metal sizes for aluminum, standard steel, stainless steel, and galvanized steel.



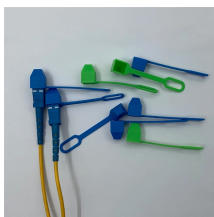
Master sheet metal thickness with ShincoFab's complete gauge charts. Convert gauges to mm/inches for Steel, Aluminum & Stainless, and avoid costly fabrication mistakes.



See sheet metal thickness charts for steel, stainless, aluminum, galvanized, and copper—plus tips to choose the right gauge for fabrication.



Once we've selected the type of sheet metal we want to use, we need to choose the appropriate thickness (i.e., gauge) for the cabinet/enclosure. See the table below for information on ...



For this month's enclosure design tips, we reviewed how to measure the thickness of various metals, and why it's important to choose the proper thickness for your sheet metal product.

Contact Us

For more information, pricing, or custom solutions, please contact us:

Website: <https://www.samastersbaseball.co.za>

Email: sales@samastersbaseball.co.za

Phone: +27 63 874 2095

Address: 15 Innovation Drive, Technopark, Stellenbosch, 7600, South Africa

This document is for informational purposes only. Specifications subject to change without notice.

