

Selection Guide for Security-Grade Optical Modulators QSFP



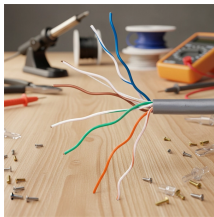
Overview

This QSFP module guide breaks down the technical specifications, practical deployment scenarios, and decision-making factors to help network engineers select and optimize these transceivers effectively. The Ultimate Guide to QSFP Optical Modules: 40G to 800G Interconnect Evolution In today's digital era sweeping across the globe, data centers—the core hubs of information processing—have an insatiable demand for high-speed, high-density data transmission solutions. LINK-PP QSFP modules offer a wide range of options that are MSA-compliant. Last March, a mid-sized cloud provider ordered 400 QSFP-DD SR8 modules for a new data center. While their switching platform and target speeds were correct, they overlooked a key detail: connector type.

Selection Guide for Security-Grade Optical Modulators QSFP



Learn how to choose QSFP-DD transceivers for 400G/800G networks, including reach, compatibility, power, and breakout options.



Confused by QSFP types? Decode the differences between QSFP+, QSFP28 (100G), and QSFP-DD. Learn how to select the right speed, connector (SR4 vs ...



This QSFP module guide provided a detailed technical overview, practical deployment example, selection checklist, troubleshooting insights, and cost considerations.



The definitive guide to the QSFP optical module series (40G, 100G, 400G, 800G). Learn the technical differences, evolution path, and optimal selection criteria for QSFP+, QSFP28, QSFP-DD, and OSFP ...



Confused by QSFP types? Decode the differences between QSFP+, QSFP28 (100G), and QSFP-DD. Learn how to select the right speed, connector (SR4 vs LR4), and Cisco-compatible coding for your ...



The definitive guide to SFP, QSFP, and QSFP-DD standards for 2025. Compare 400G/800G optics, understand PAM4 complexity, and master QSFP-DD vs OSFP deployment ...



This article explores the technical characteristics, product lineup, and use cases of 400G OSFP/QSFP-DD/QSFP112 modules to choose the most suitable 400G solution for your data centers.



Whether you're scaling up a data center or deploying edge connectivity for telecom, selecting the right optical transceiver is crucial. Understanding the specifications ...



QSFP modules employ various optical connector types depending on the application and reach requirements. The mechanical interface must ensure proper fiber alignment and minimize ...



Whether you're scaling up a data center or deploying edge connectivity for telecom, selecting the right optical transceiver is crucial. Understanding the specifications of QSFP-DD, QSFP28, QSFP56, ...



3. SELECTION GUIDE QSFP-DD er optic cable assemblies. This specification aims to provide an easy-to-use selection guide for fiber optic cables used with standard TX s of optical transceivers. High ...



Learn how to choose QSFP modules for 40G, 100G, QSFP28, QSFP56, and 400G QSFP-DD networks. Compare speed, distance, fiber type, compatibility, and LINK-PP products.

Contact Us

For more information, pricing, or custom solutions, please contact us:

Website: <https://www.samastersbaseball.co.za>

Email: sales@samastersbaseball.co.za

Phone: +27 63 874 2095

Address: 15 Innovation Drive, Technopark, Stellenbosch, 7600, South Africa

This document is for informational purposes only. Specifications subject to change without notice.

