

# Selection Guide for 10G AI Servers for Subway Use



## Overview

In this comprehensive guide, we will explore the key factors to consider when selecting an AI server setup, including understanding your AI workload requirements, determining the right hardware configuration, choosing the right operating system, selecting the right. In this comprehensive guide, we will explore the key factors to consider when selecting an AI server setup, including understanding your AI workload requirements, determining the right hardware configuration, choosing the right operating system, selecting the right. At its core, SFP+ (Small Form-factor Pluggable Plus) is a compact, hot-swappable transceiver designed to deliver 10 Gigabit Ethernet (10GbE) speeds over fiber or copper connections. Compared to traditional RJ45-based networking, SFP+ offers advantages in latency, power efficiency, and flexibility. The Definitive VRLA Tech Hardware Guide for Deep Learning, LLM Training, Scientific Computing, and AI Development The AI hardware landscape has changed dramatically in 2025. Between NVIDIA's new Blackwell architecture, choosing the right AI workstation or AI server is more important than ever. CloudMinister is an Indian Company that provides high-performance GPU clusters, equipped with NVIDIA-grade accelerators, NVMe

storage, high-throughput Networking and Managed Services. We design custom configurations, optimize drivers and provide 24/7 support to help you accelerate your development. The Central Processing Unit (CPU) has traditionally been the workhorse of all computing tasks, including early AI applications. Picking the right processors will jumpstart your supercomputing platform and expedite your AI-related computing. Networking: 10-100 GbE for low-latency access. Benefit: Fast, cost-efficient, secure AI infrastructure tailored for niche micro-AI workloads.

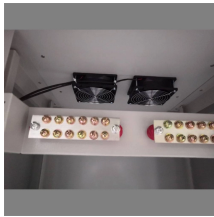
## Selection Guide for 10G AI Servers for Subway Use



Discover expert insights on choosing CPUs and GPUs for AI servers, exploring key analysis and solutions to optimize your AI infrastructure's performance and efficiency.



A comprehensive guide to selecting the right server specifications (CPU, GPU, RAM) for AI workloads, covering deep learning, inference, and data processing."



Choose the right AI workstation or server with Blackwell GPUs, RTX 50-Series, and EPYC 9005 for LLM training, ML workloads, and enterprise AI.



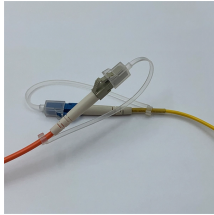
This article will share a carefully planned and practically verified hardware selection plan, aiming to build a powerful machine with the ultimate cost-performance that can handle both daily use ...



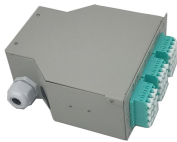
Explore key considerations for AI servers and how to design them to support AI workloads optimally.



Step-by-step guide to deploying AI models on GPU servers. Improve inference speed, optimize performance, and streamline your AI workflows.



Powered by the latest NVIDIA Blackwell architecture, AMD EPYC or Intel Xeons processors, our GPU optimized AI servers deliver unbeatable performance and scalability for your most demanding ...



Discover how to choose the right AI server setup for your workload. Explore hardware, storage, OS, networking, scalability, security, and management best practices.



Step-by-step guide to deploying AI models on GPU servers. Improve inference speed, optimize performance, and streamline your AI workflows.



Learn what SFP 10 Gbps (SFP+) is, how it compares to Ethernet, and how to choose the right 10G module. Includes real-world engineer insights.



Build a system that matches your exact AI workload requirements. Choose the right GPU, CPU, RAM, and storage without paying for unused cloud capacity, idle GPUs, or oversized ...

## Contact Us

For more information, pricing, or custom solutions, please contact us:

Website: <https://www.samastersbaseball.co.za>

Email: [sales@samastersbaseball.co.za](mailto:sales@samastersbaseball.co.za)

Phone: +27 63 874 2095

Address: 15 Innovation Drive, Technopark, Stellenbosch, 7600, South Africa

This document is for informational purposes only. Specifications subject to change without notice.

