

# **Ring Main Unit Fiber Optic Cable Access**



## Ring Main Unit Fiber Optic Cable Access



One approach that has proven effective in achieving these goals is using a fibre ring topology by running multiple redundant geographically different fibre paths to the cabinet.



It is located at the front of the unit for ease of access. It is used for testing cable insulation and to locate faults in the circuit without the need to remove the main cables from the cable compartment, which ...



Feeder Cables – These cables are the main cable(s) being routed through a populated area. Assemblies are normally fiber-rich, including fiber counts from 72 to 1,728 strands. Distribution Cables – ...



This innovative solution integrates fluorescent fiber optic temperature sensors directly into cable terminations without compromising electrical performance, offering unprecedented visibility into ...



The advantages of this network structure are more flexibility, shared fiber between active nodes in the central office, and reduced fiber optic cable core requirements, resulting in cost reduction.



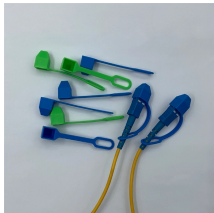
Fiber optic cables, especially backbone cables, may contain many fibers that connect a number of different links which may not even be going to the same place. The fiber optic cable plant, therefore, ...



The physical layout of a fiber ring is a closed-loop topology where every network device, known as a node, is connected to exactly two other nodes. Data is transmitted across this fiber using ...



Metro rings are used for high-speed data services, including internet access and inter-office communications. An ADM is a device used in fiber optic rings that allows specific channels ...



Ring main cables enter and leave the cabinet. This type of switchgear is used for medium-voltage power distribution, from 7200 volts to about 36000 volts. The ...



In this configuration, the computers in the ring link to a main communication cable. The network receives information via a "token" containing information requested by one or more computers on the network. ...



Learn how to design a fiber optic ring network with practical diagrams, topologies, and switch setup tips. Explore ring network switch options for industrial applications.

## Contact Us

For more information, pricing, or custom solutions, please contact us:

Website: <https://www.samastersbaseball.co.za>

Email: [sales@samastersbaseball.co.za](mailto:sales@samastersbaseball.co.za)

Phone: +27 63 874 2095

Address: 15 Innovation Drive, Technopark, Stellenbosch, 7600, South Africa

This document is for informational purposes only. Specifications subject to change without notice.

