

Requirements for Real Estate Distribution Boxes



Overview

Choose the right box based on environment (indoor/outdoor), load capacity, and durability. Check for proper IP/NEMA ratings and material quality. Always check with your local postmaster for specific installation guidelines. Get help from rep! Call For Pricing on 3+ units! Additional Discounts for Members! Call For Pricing on 3+ units! Additional Discounts for Members! Call For Pricing on 2+ units! Additional Discounts for Members! Call For. The National Electrical Code (NEC) requirements might seem like bureaucratic red tape, but they're more like the safety rails that keep everything running smoothly and prevent dangerous surprises. Regency Decorative CBU's are made of heavy duty aluminum, include decorative tops and pedestal covers and are available in five (5) contemporary colors. Ensure safe placement: install in dry, accessible areas with good ventilation and at appropriate height (typically ~1. This guide provides information about the types of USPS®-approved mailbox equipment options available commercially and information about other aspects of mail delivery planning that may apply to. The Zoning Ordinance -- more commonly called the Zoning Code -- is Title 20 of the San José Municipal Code. It is an evolving set of regulations that promote and protect the public peace, health,

safety, and general welfare by: Guiding, controlling, and regulating future growth and development in.

Requirements for Real Estate Distribution Boxes



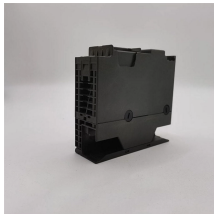
A: Yes, there are specific requirements and guidelines set by the City of San Jose, California for obtaining a Certification of Posting & Distribution. These may include the size and content of the ...



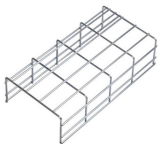
Learn how to install a distribution box safely and correctly. Covers wiring, placement, standards, and expert tips for a compliant setup.



The installation requirements and specifications of Distribution box involve many aspects, including site selection, fixing method, wiring specifications ...



As a matter of local discretion, associations and MLSs may require placement of an “approved” lockbox on listed properties if any device giving access to real estate professionals or ...



To determine your property's zoning, use one of these four methods: Go to and enter the property address or Assessor's Parcel Number (APN). View the Zoning Map. Call the ...



Learn what California code requires for electrical boxes, from sizing and conductor fill to mounting depth, outdoor use, and when you need a permit.



The latest NEC updates prioritize adaptive solutions for modern energy demands. With homes now packing solar arrays, EV chargers, and smart-home systems, distribution boxes work harder than ...



The 2022 California Building Standards Code (Cal. Code Regs., Title 24) was published July 1, 2022, with an effective date of January 1, 2023. Summaries of the code changes in this edition and the ...



The following paragraphs provide important U.S. Postal Service guidelines for determining the location, type of mailbox receptacles, and other requirements related to initiating new mail delivery for ...



Shop USPS-approved cluster and pedestal mailboxes for new multi-family developments across California. Secure & compliant options for centralized mail delivery.



In this blog post, we'll explore the topic of real estate lock box security. We are going to examine the different types of lock boxes available, the potential risks and vulnerabilities, and the ...



We cover CBU and STD-4C standards for commercial properties, ADA compliance with USPS height requirements, parcel locker ratios, curbside ...



Yes, Cluster Mailboxes, also known as Cluster Box Units (CBU's), are generally required by the U.S. Postal Service (USPS) for all newly developed residential communities.



Handbook PO-632, National Delivery Planning Standards - A Guide for Builders and Developers July 2020

Contact Us

For more information, pricing, or custom solutions, please contact us:

Website: <https://www.samastersbaseball.co.za>

Email: sales@samastersbaseball.co.za

Phone: +27 63 874 2095

Address: 15 Innovation Drive, Technopark, Stellenbosch, 7600, South Africa

This document is for informational purposes only. Specifications subject to change without notice.

