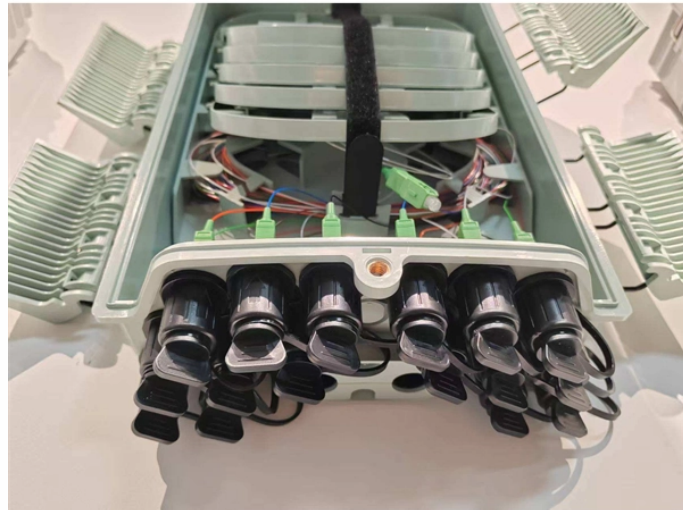


Requirements for Outdoor Installation of Complete Distribution Boxes



Overview

NEC Requirements for Outdoor Distribution Boxes: Complete specification guide for outdoor electrical distribution boxes covering NEC Article 312 requirements, NEMA ratings, sizing calculations, and selection criteria for commercial and residential applications. □□ Specification Insight: NEC 312. If it's done poorly, you risk short circuits, fire hazards, or system failure. Done right, it ensures safety, compliance, and long-lasting performance. In this guide, we'll break down everything you need to know to install. Receptacles must be weather-resistant (WR-rated) and installed in weatherproof enclosures. At every one-family dwelling, at least one receptacle must be installed at the front and one at the rear of the. An outdoor electrical panel box, often called a subpanel, is a crucial component for distributing power to exterior locations like workshops, swimming pools, hot tubs, or landscape lighting. This. A box's ability to resist environmental intrusion is defined by its Ingress Protection (IP) or National Electrical Manufacturers Association (NEMA) rating.

Requirements for Outdoor Installation of Complete Distribution Box



Learn how to complete a safe, code-compliant Outdoor Electrical Panel Installation with the right tools, PPE, and Linkewell's weatherproof power distribution box.



Low voltage distribution box outdoor use requires IP65 or NEMA 4X ratings, corrosion-resistant materials, and proper sealing for lasting weather protection.



This specification guide provides system designers, electrical engineers, and procurement professionals with the technical criteria needed to select compliant outdoor electrical ...



The National Electrical Code (NEC) provides essential rules for setting up outdoor circuits and equipment safely. Outdoor wiring requires careful attention to prevent moisture and corrosion, ...



Learn what an outdoor electrical junction box is, NEC 314 requirements, types like pull boxes and splice boxes, proper sizing rules, and when you need weatherproof protection.



Outdoor wiring faces harsher conditions than indoor installations as it is exposed to moisture, sunlight, and mechanical damage. Below is a comprehensive guide to NEC rules for ...



Learn how to install a distribution box safely and correctly. Covers wiring, placement, standards, and expert tips for a compliant setup.



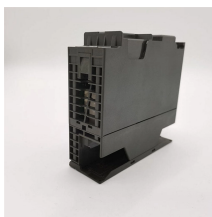
Outdoor wiring faces harsher conditions than indoor installations as it is exposed to moisture, sunlight, and mechanical damage. Below is a comprehensive guide to NEC rules for ...



Install a secure, weatherproof exterior electrical box. Learn proper selection, secure mounting, moisture exclusion, and essential NEC code compliance.



This comprehensive technical guide explores the engineering principles behind outdoor electrical boxes with integrated breakers, focusing on circuit protection strategies, load distribution ...



A properly installed panel ensures that these outdoor amenities receive power safely and reliably. This guide provides a detailed walkthrough of the installation process, emphasizing safety and adherence ...

Contact Us

For more information, pricing, or custom solutions, please contact us:

Website: <https://www.samastersbaseball.co.za>

Email: sales@samastersbaseball.co.za

Phone: +27 63 874 2095

Address: 15 Innovation Drive, Technopark, Stellenbosch, 7600, South Africa

This document is for informational purposes only. Specifications subject to change without notice.

