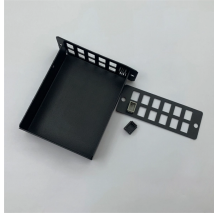


Relay protection device for generator



Relay protection device for generator



Despite the monitoring, electrical and mechanical faults may occur, and the generators must be provided with protective relays which, in case of a fault, quickly initiate a disconnection of the machine from ...



Powered by electromagnets, a relay is simply a mechanical switch, and you'll find them all over a typical house or car. Find out what these simple components are doing in all your electrical ...



A Relay is a simple electromechanical switch. While we use normal switches to close or open a circuit manually, a Relay is also a switch that connects or disconnects two circuits.



A relay is an electromagnetic switch that opens and closes circuits electromechanically or electronically. A relatively small electric current that can turn on or off a much larger electric current operates a relay.



The SEL-700G is the right solution for utility and industrial generator protection, with autosynchronizer, flexible I/O, and advanced communications. Apply the SEL-700G Relay for comprehensive primary ...



An electrical relay is an electrically operated switch that uses an electromagnet to control one or more sets of contacts. Relays allow a low-power signal to control a high-power circuit, providing isolation ...



The G60, a member of the UR family of protection relays, provides ultimate protection for AC generators. Provides 100% stator ground fault by low frequency injection (GPM-S module required) and field ...



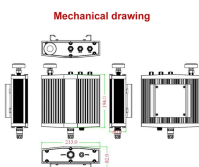
The Reyrolle 7PG23 is an electro-mechanical relay that detects earth faults in high impedance schemes to provide restricted earth fault protection.



Learn how a relay works and how you can use it to turn on/off high-power devices with tiny signals. Includes practical circuit examples.



Generator protection relays are devices that detect abnormal operating conditions and isolate the generator from the system to prevent ...



The relay include protection for overcurrent, overload, broken conductor, earth-fault and breaker failure as per ANSI. It also feature an automatic recloser, a switch ON to fault, inrush protection and lockout ...



Relays are electronic switches used when an independent low-voltage signal is needed to control a high-power circuit. They commonly use an electromagnet (coil) to operate their internal mechanical ...



A relay is an electrical switch that can be activated by a low-power signal. Learn more about what is a relay and their many applications here!



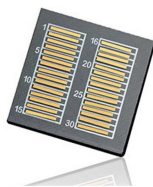
Generator relays are essential for real-time monitoring and fast detection of any operational anomalies, enabling immediate automatic shutdown to prevent damage. Each relay is customizable to align with ...



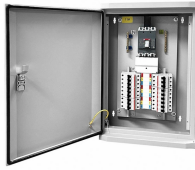
Protective relays are used to detect both internal and external faults, ensuring comprehensive generator protection. They are the silent heroes and a strong weapon as well to ...



The devices come equipped with dedicated generator protections in addition to standard overcurrent and voltage protection functionalities. Additionally, the high-end devices include differential protection.



This guide covers relay types, contact configurations, pin labels, selection tips, applications, relay vs. transistor comparison, and how to test and troubleshoot relays.



Generator protection relays are devices that detect abnormal operating conditions and isolate the generator from the system to prevent damage. These relays act as the first line of defense ...



There are various protection relays and those are used for protection against a wide variety of conditions. Protection relays protect the generator, prime mover, external power system or the ...

Contact Us

For more information, pricing, or custom solutions, please contact us:

Website: <https://www.samastersbaseball.co.za>

Email: sales@samastersbaseball.co.za

Phone: +27 63 874 2095

Address: 15 Innovation Drive, Technopark, Stellenbosch, 7600, South Africa

This document is for informational purposes only. Specifications subject to change without notice.

