

RRU optical module indicator light is red



Overview

Identify the faulty SFP module connected to the RU or RRU. RRU indicators light are briefly abbreviated as follows (PWR, RUN, ALM, ACT, VSWR, SYNC, CPRI 0, CPRI 1). These indicator lights (LEDs) help you quickly understand the unit's status without logging into the system. While the exact labels may vary slightly by vendor (like Huawei, Ericsson, Nokia), the. Page 3 Purpose This document describes routine maintenance procedures for an RRU such as equipment maintenance and power-on and power-off operations. It also explains how to replace the RRU and optical modules. The following table lists the product.

- Actions for RiPort 1. LinkFailure specificProblem LinkFailure
- eventType probableCause EQUIPMENT_AL ARM LINK_FAILURE perceivedS Managed every Object serviceImpact (CellDown, CellAvailability = 0%) (Y =.

After an RRU is powered on, check the status of RRU indicators and voltage.

RRU optical module indicator light is red



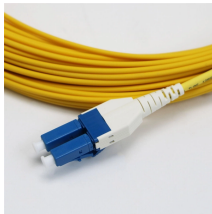
The Operation regenerative rectifier principle unit (RRU) consists of one or more rectifier modules ($n \times R8i$) and an L-filter. Each R8i module consists of six IGBT components and six diodes ...



- The performance of an optical module that is exposed to air for more than 20 minutes may be abnormal. Therefore, you must insert an optical fiber into an unpacked optical module within ...



You must disconnect optical fibers from an optical module before replacing the optical module. Disconnecting the optical fibers interrupts the transmission of ...



It takes about 5 minutes to replace an optical module on the RRU, which involves removing fiber optic cables and a faulty optical module, installing a new optical module and the fiber optic cable, and ...



The RRU is convection cooled and designed for outdoor installation. The values shown in Table 3 are meant to give an idea of heat dissipation when the unit is installed indoor, or around other RRUs.



5G BBU & RRU Installation and Operation Guide - Free download as PDF File (.pdf), Text File (.txt) or read online for free.



About This Manual Purpose This manual describes the software and hardware structures, interfaces and cables, functions, features, technical specifications, installation modes, networking, and maintenance ...



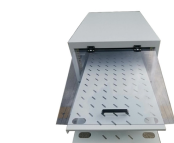
If the alarm ports of a Remote Radio Unit (RRU) are configured for power outage supervision, the ExternalAlarm is ceased on affected alarm ports at RRU power outage.



You must disconnect optical fibers from an optical module before replacing the optical module. Disconnecting the optical fibers interrupts the transmission of CPRI signals.



RRU indicators light are briefly abrivated as follows (PWR, RUN, ALM, ACT, VSWR, SYNC, CPRI 0, CPRI 1). These indicator lights (LEDs) help you quickly understand the unit's status without...



This document describes routine maintenance procedures for an RRU such as equipment maintenance and power-on and power-off operations. It also explains how to replace the RRU and optical modules.

Contact Us

For more information, pricing, or custom solutions, please contact us:

Website: <https://www.samastersbaseball.co.za>

Email: sales@samastersbaseball.co.za

Phone: +27 63 874 2095

Address: 15 Innovation Drive, Technopark, Stellenbosch, 7600, South Africa

This document is for informational purposes only. Specifications subject to change without notice.

