

Quotation for 1 6 TONU Optical Network Units for Data Center Interconnection



Overview

For easy reference, download our helpful network quotation templates on this page! What Is a Network Quotation?

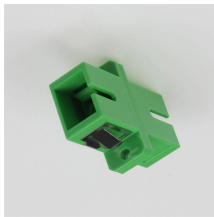
For easy reference, download our helpful network quotation templates on this page! What Is a Network Quotation?

While OSFP1600 supports future switch chips with 200 Gb/s electrical lanes, there is strong market interest in 1.6 Tb/s optical modules based on the existing 100 Gb/s electrical lane ecosystem. By increasing the number. Hilink's DCI1600 optical service conversion subsystem is a service platform customized for data center interconnection (DCI) applications. It can achieve a maximum transmission capacity of 1.800G transceiver shipments achieving 100% YoY increase. NVIDIA announcing silicon photonics co-packaged optics switches. At the same time, your WAN solution has to be flexible so as to reach across any.

Quotation for 1 6 TONU Optical Network Units for Data Center Inter



Ekinops optical transport solutions for data center interconnection optimize cost and performance to deploy as much capacity as possible in the minimum space possible using as little power as possible.



While OSFP1600 supports future switch chips with 200 Gb/s electrical lanes, there is strong market interest in 1.6 Tb/s optical modules based on the existing 100 Gb/s electrical lane ecosystem. ...



Ultra-high-speed optical transmission technologies are developing extremely rapidly under the driven of Data Center Interconnection. 800Gb/s is undergoing labor



Hilink's DCI1600 optical service conversion subsystem is a service platform customized for data center interconnection (DCI) applications. It can achieve a maximum transmission capacity of 1.6Tbps.



Hilink's DCI1600 optical service conversion subsystem is a service platform customized for data center interconnection (DCI) applications. It can achieve a ...



To have a more in-depth understanding as to the specific format and content of network quotations, download the templates on site or you may also opt to refer to our wide collections of quotation ...



The optical interconnect landscape is evolving faster than at any point in data center history. AI workloads drive bandwidth requirements that push every technology to its limits.



By late this decade, we can expect that every layer of an AI data center's scale-out fabric will be optical, with photonics tightly integrated into switch and even network card designs.



Based on the MS-OTN architecture, the highly integrated optical-electrical convergence platform supports access of PCM, PDH, SDH, PKT and OTN services. With powerful unified cross-connect ...



Data center interconnect (DCI) refers to the technology and infrastructure used to connect two or more data centers over short, medium, or long distances. It enables the smooth transfer of data, ...



The data center interconnect is moving toward 1.6 Tbit/s, which is posing challenges for reaching a solution that is cost effective and technically feasible. Intensity modulation and direct ...

Contact Us

For more information, pricing, or custom solutions, please contact us:

Website: <https://www.samastersbaseball.co.za>

Email: sales@samastersbaseball.co.za

Phone: +27 63 874 2095

Address: 15 Innovation Drive, Technopark, Stellenbosch, 7600, South Africa

This document is for informational purposes only. Specifications subject to change without notice.

