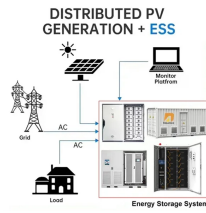


Quality of Tri-proof and Explosion-proof Distribution Boxes



Quality of Tri-proof and Explosion-proof Distribution Boxes



What does it take to make an effective explosion-proof junction box or cabinet? An incredible mechanical engineering design is what you need. Design for such enclosures and storage boxes differ with each ...



·Equipped with specialized hinge structure, which can prevent the flameproof joints from damage when opening and closing the box, and greatly prolong the service life of box. The boxes can be combined ...



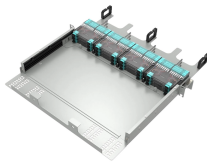
Consider certifications, enclosure ratings, electrical needs, materials, and maintenance when selecting explosion-proof distribution boxes.



At Ex Industries, we specialize in manufacturing and supplying Explosion-Proof Enclosures, Flameproof Enclosures, and Hazardous Location Enclosures designed to meet the highest global safety ...



Measures: In order to ensure safe use, lighting explosion-proof distribution boxes (boards) are required not to be made of flammable materials. Even in dry, dust-free places, wooden explosion-proof ...



Poorly designed boxes can become points of failure due to loose connections, moisture ingress, or mechanical damage. Conversely, robust explosion-proof terminal solutions contribute to ...



Shenhai: With 25 years of expertise, we lead in manufacturing high-quality explosion-proof lights, junction boxes, and pipe fittings for hazardous environments. Trusted ...



Developing a precise technical specification for explosion proof cabinets is fundamental for safety and operational integrity in hazardous environments. These specifications dictate the ...



When we talk about ATEX-certified junction boxes, we're discussing systems that undergo rigorous testing to earn that classification. They're designed to meet two critical challenges: contain internal ...



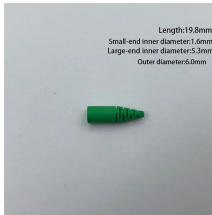
In this blog post, MINMILE, as high quality explosion proof control boxes manufacturer, will share the importance of explosion proof distribution boxes in improving workplace safety, ...



This clever design reduces the need for heavy cast metal enclosures and conduit seals. It minimizes safety risks caused by incorrect installation such as wrong torque on the bolts or improperly poured ...



Learn everything about explosion proof enclosures for hazardous areas—design, certification, and industrial applications with ATEX, IECEx, and Class I Div ...



Shenhai: With 25 years of expertise, we lead in manufacturing high-quality explosion-proof lights, junction boxes, and pipe fittings for hazardous environments. Trusted by industry leaders, discover ...

Contact Us

For more information, pricing, or custom solutions, please contact us:

Website: <https://www.samastersbaseball.co.za>

Email: sales@samastersbaseball.co.za

Phone: +27 63 874 2095

Address: 15 Innovation Drive, Technopark, Stellenbosch, 7600, South Africa

This document is for informational purposes only. Specifications subject to change without notice.

