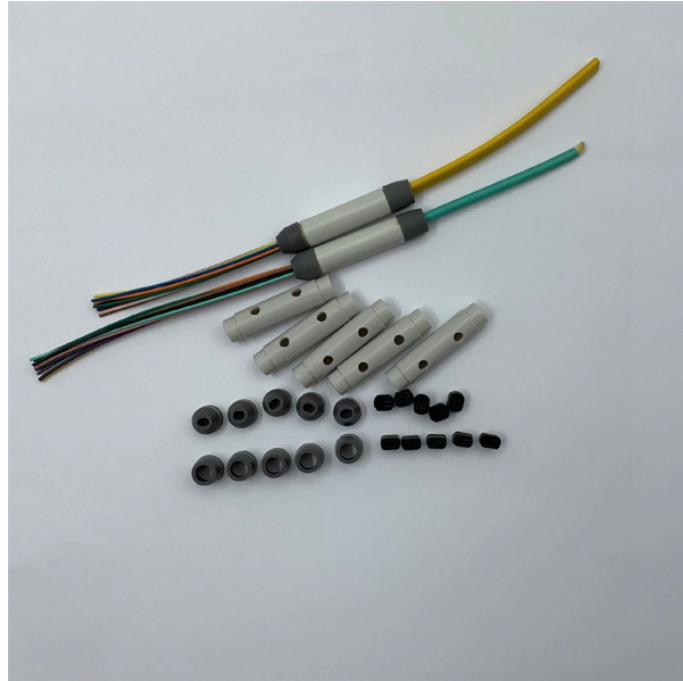


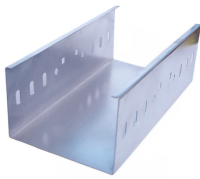
QSFP28 Optical Module Size



QSFP28 Optical Module Size



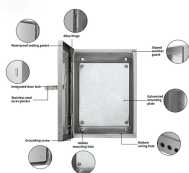
Amphenol's 100G QSFP28 optical modules include SR4, AOC, AOC break out, CWDM4, LR4, ER4 Lite, ER4 and ZR4 series, which adopt LC or MPO optical ports and are compatible with ...



About Get Help The Windows Get Help app is a centralized hub for accessing a wide range of resources, including tutorials, FAQs, community forums, and direct assistance from Microsoft support ...



This module contains 4-lane optical transmitter, 4-lane optical receiver and module management block including 2 wire serial inter-face. The optical signals are multiplexed to a single-mode fiber through ...



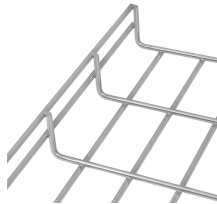
These standards define the size, electrical interface, connector type, and mechanical structure of a module, ensuring it can be installed in compatible switches, routers, or network interface cards. Well ...



The Cisco QSFP28 100G ZR module expands the portfolio of digital coherent optics (DCO) modules to connect QSFP28 ports.



SFP vs SFP+ vs SFP28 vs QSFP+ vs QSFP28: 2026 Optical Transceiver Selection Guide A practical, engineer-friendly guide to choosing the right transceiver form factor by speed, port ...



Microsoft Support is here to help you with Microsoft products. Find how-to articles, videos, and training for Microsoft Copilot, Microsoft 365, Windows 11, Surface, and more.



Activation helps verify that your copy of Windows is genuine and hasn't been used on more devices than the Microsoft Software License Terms allow. This article will help you troubleshoot and fix common ...



Learn how to install Windows 11, including the recommended option of using the Windows Update page in Settings.



Find help and how-to articles for Windows operating systems. Get support for Windows and learn about installation, updates, privacy, security and more.



How to use the Windows Get Help app if you are using Windows with a Microsoft personal account.



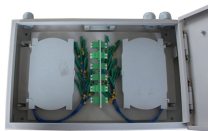
In Windows 11, you decide when and how to get the latest updates to keep your device running smoothly and securely. Select Start Settings Windows Update > select Check for Windows updates.



When used with Intel® Ethernet Network Adapters with QSFP28 connectivity, these optics provide interoperability and secure connections for virtualized platforms, high-speed networking, and ...



Contact Microsoft Support. Find solutions to common problems, or get help from a support agent.



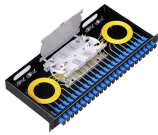
Unlike older CFP modules, the 100g qsfp28 optical transceiver module is much smaller. This compact size allows network architects to maximize switch port density. It follows the Multi ...



Here are a few different ways to find help for Windows Search for help - Enter a question or keywords in the search box on the taskbar to find apps, files, settings, and get help from the web.



The transmitting end of an optical module converts electrical signals into optical signals, while the receiving end converts optical signals back into electrical signals. Optical modules are classified by ...



In terms of physical size, the QSFP+ and QSFP28 modules have the same form factor. They both have the same dimensions, which are approximately 18.4 mm in width and 72 mm in ...



The QSFP28-100GBase-LR4 is a 103/112 Gbps transceiver module designed for optical communication applications compliant to 100GBASE-LR4 of the IEEE P802.3ba standard and OUT-4.



Find and open File Explorer in Windows, and customize Quick access by pinning and removing files and folders.

Contact Us

For more information, pricing, or custom solutions, please contact us:

Website: <https://www.samastersbaseball.co.za>

Email: sales@samastersbaseball.co.za

Phone: +27 63 874 2095

Address: 15 Innovation Drive, Technopark, Stellenbosch, 7600, South Africa

This document is for informational purposes only. Specifications subject to change without notice.

