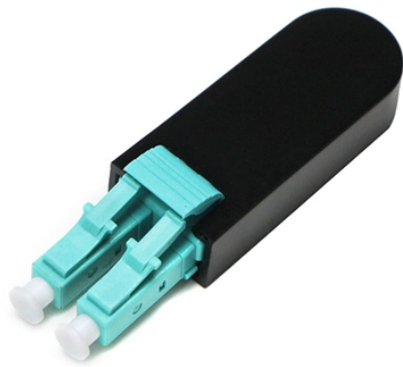


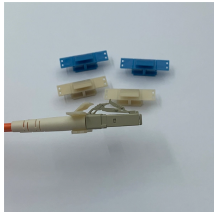
## Power Distribution Box Circuit Breaker Installation Diagram



## Power Distribution Box Circuit Breaker Installation Diagram



A detailed diagram of a breaker box, showing its components and how they function to protect electrical systems from overloads and faults.



Inside Main Breaker Box  
How to Wire 120V Circuits & Breakers  
How to Wire 240V Circuits & Breakers  
Wiring Color Codes  
Safety Precautions  
The following tutorial shows how to wire 120V single phase breaker box installation in home. 120V single phase circuits are generally used in home wiring for lighting circuits and outlet receptacles. To do so, simply mount and connect a single pole (15A or 20A) circuit breaker to any of the hot busbar (out of hot 1 or hot 2) with the help of metal ... See more on electrical technology  
electraschematics



Hey, in this article we are going to see the Single Phase Distribution Box Wiring Diagram and Connection Procedure. A distribution board or distribution box is where the main power supply is ...



Learn how to wire a single-phase breaker box with a comprehensive wiring diagram. Ensure a safe and efficient electrical setup.



Learn how to wire a single phase breaker box with a wiring diagram. Understand the different components and connections involved in setting up a safe and efficient electrical system. Get step-by ...



This page contains wiring diagrams for a service panel breaker box and circuit breakers including: 15amp, 20amp, 30amp, and 50amp as well as a GFCI breaker and an isolated ground circuit.



Learn how to read and understand wiring diagrams for breaker boxes to ensure proper electrical configurations and safety measures.



These three wires enter the meter box and then connect to the main panel. In the following tutorial, we will show how to wire 120V single-phase and 240V split-phase circuit breakers and loads inside a ...



Find out how to properly wire an electrical panel box with a comprehensive diagram and step-by-step instructions.



This bulletin contains instructions for installing Square D brand I-Line circuit breaker power distribution panelboards.



Here we are considering a Distribution Board with MCBs [Miniature Circuit Breakers] for power distribution. Installation work described here is according to British Standards [ IEE Regulations and ...

## Contact Us

For more information, pricing, or custom solutions, please contact us:

Website: <https://www.samastersbaseball.co.za>

Email: [sales@samastersbaseball.co.za](mailto:sales@samastersbaseball.co.za)

Phone: +27 63 874 2095

Address: 15 Innovation Drive, Technopark, Stellenbosch, 7600, South Africa

This document is for informational purposes only. Specifications subject to change without notice.

