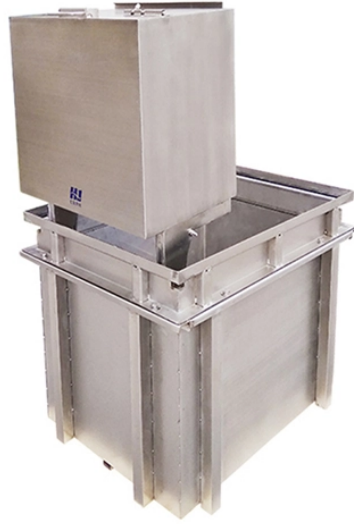


Portugal RoHS Active Optical Module 2 5G



Portugal RoHS Active Optical Module 2 5G



155M-2.5G CSFP BiDi GIGALIGHT's CSFP series optical transceiver modules include two single-fiber bidirectional channels, each supporting data rates from 155Mbps to 2.5Gbps.



Sopto 2.5G SFP module is a series of optical fiber modules designed for use in 2x/1x Fibre Channel and Gigabit Ethernet . They are compliant with the SFP+ MSA. Digital diagnostics functions are available. ...








RTXM192-452/470 2.5G SFP transceiver modules are designed for use in 2.5 Gigabit SDH links on up to 40km of single mode fiber. They are compliant with the SFP MSA. The optical transceiver is RoHS ...



Transpõe as Diretivas Delegadas (UE) 2024/232 e (UE) 2024/1416, no respeitante a isenções aplicáveis à utilização de cádmio e de chumbo. Transpõe diversas diretivas da União Europeia, incluindo o uso ...



Optcore 2.5G SFP transceivers are an industry-standard small form-factor pluggable module for SONET OC-48, SDH STM-16 (2488 Mbps) applications. These SFP modules comply with the SFP MSA, CE, ...

	<p>1000BASE-T RoHS Compliant Copper SFP Transceiver sed on the SFP Multi Source Agreement (MSA)1. They are compatible with the Gigabit Ethernet and 1000BASE T stan-dards as specified in ...</p>
	<p>Saving half fiber by using only one fiber for transmitting and receiving. Hot pluggable SFP MSA compliant. Digital optical monitoring capability for strong diagnostic capabilities. Compliant with IEEE ...</p>
	<p>Introduction The SFP-2.5G Series 1-port 2.5 Gigabit Ethernet SFP modules are available as optional accessories for a wide range of Moxa switches.</p>
	<p>The AMG SFP-2.5G series are industrial high speed 2.5Gb Ethernet SFP's ofering support for multiple cable types including copper (Cat5E or higher) as well as Multimode or Singlemode optical fiber.</p>
	<p>FS 2.5G SFP solution with low power consumption provides an ideal connection option for 2.5G Ethernet over Cat5e cable, switch to switch interface, and AP/Router interface.</p>

Contact Us

For more information, pricing, or custom solutions, please contact us:

Website: <https://www.samastersbaseball.co.za>

Email: sales@samastersbaseball.co.za

Phone: +27 63 874 2095

Address: 15 Innovation Drive, Technopark, Stellenbosch, 7600, South Africa

This document is for informational purposes only. Specifications subject to change without notice.

