

# Photovoltaic Power Plant Ring Network Switch



## Overview

A Photovoltaic High-Voltage Ring Main Unit is: A compact, sealed, and insulated medium-voltage (typically 11kV–36kV) switchgear unit used in solar farms to connect multiple PV inverter outputs, ensure safe power flow, and provide protection and switching in a ring network. A Photovoltaic High-Voltage Ring Main Unit is: A compact, sealed, and insulated medium-voltage (typically 11kV–36kV) switchgear unit used in solar farms to connect multiple PV inverter outputs, ensure safe power flow, and provide protection and switching in a ring network. A Photovoltaic High-Voltage Ring Main Unit (PV HV RMU) is a specialized type of medium-voltage switchgear designed for solar power plants (photovoltaic systems). It plays a crucial role in the collection, protection, and distribution of electrical power generated by PV inverters before it is. Deployment Solution for Industrial Ethernet Switches in the Energy Industry (Wind Power/Photovoltaic): Practical Insights from a Seasoned Perspective In the energy industry, particularly in the fields of wind power and photovoltaics, industrial Ethernet switches are emerging as the core components. SFA-RM units are designed for supplying reliable energy, protecting electrical equipment in secondary distribution networks up to 17.

SFA-RM units are the best solution for indoor/outdoor distribution substations. Their compact design makes them suitable for various network applications such as. A ring main unit (RMU) is a metal-enclosed medium voltage switchgear system that integrates switching, protection, control, and monitoring into one compact assembly for ring network power distribution.

## Photovoltaic Power Plant Ring Network Switch



A Ring Main Unit is a compact, enclosed switchgear unit used in medium-voltage power distribution networks. It is typically installed in secondary distribution systems to manage and isolate ...



Ring Main Units, or RMUs, play a key role when connecting big photovoltaic plants to the main electricity network. These units provide all the essential equipment needed to hook up massive ...



RMUs are compact, fully enclosed switchgear designed for medium-voltage power distribution networks. They enhance reliability, improve safety, and support the growing demands of ...



SFA-RM units are designed for supplying reliable energy, protecting electrical equipment in secondary distribution networks up to 17.5 kV. SFA-RM units are the best solution for indoor/outdoor distribution ...



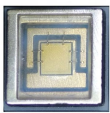
A ring main unit is a compact medium-voltage switching cabinet that connects, protects, and controls feeders in a ring-type distribution network so power can be supplied more reliably from ...



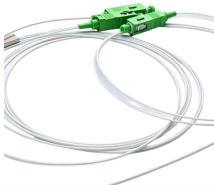
Practical Case: A certain photovoltaic power plant adopted USR-ISG switches to connect inverters and the control center through a fiber optic ring network, achieving real-time data collection and remote ...



Thus, the SMA Fuel Save Controller and the Power Plant Controller, for example, can be operated separately in a ring. The devices to be controlled must be in the same subnet as the plant control.



Industrial Ring Ethernet Switch Slim Type for More Practicability and Convenience PLANET IFGS-620TF is the first Unmanaged industrial-grade Ring Ethernet Switch, featuring four 10/100BASE-TX ...



A compact, sealed, and insulated medium-voltage (typically 11kV–36kV) switchgear unit used in solar farms to connect multiple PV inverter outputs, ensure safe power flow, and provide ...



Ring main switches and fuse switches have three operational positions – ON, OFF and EARTH. A description of the electrical status for each position is shown in Table 2 below.

## Contact Us

For more information, pricing, or custom solutions, please contact us:

Website: <https://www.samastersbaseball.co.za>

Email: [sales@samastersbaseball.co.za](mailto:sales@samastersbaseball.co.za)

Phone: +27 63 874 2095

Address: 15 Innovation Drive, Technopark, Stellenbosch, 7600, South Africa

This document is for informational purposes only. Specifications subject to change without notice.

