

Performance comparison intelligent optical path switch vs single-mode vs multi-mode



Overview

Single Mode fibers have a smaller core, allowing light to travel in a single, straight path, ideal for long distances with less signal loss. This single light path is launched by a narrow-linewidth laser source, which travels with minimal modal dispersion, allowing the optical signal to preserve its shape over. The fundamental difference lies in the path light takes through the fiber cable. Distance: SMF (OS2) is built for kilometers (up to 100km+); MMF (OM3/OM4/OM5) is built for meters (up to. In the complex landscape of fiber optic infrastructure, selecting the right cable type—single-mode (OS1/OS2) or multimode (OM1/OM2/OM3/OM4/OM5)—can define a network's speed, reach, and cost-effectiveness. Both have distinct characteristics that impact performance, cost, and application suitability. Choosing the right fiber depends heavily on the physical environment and the required throughput.

Performance comparison intelligent optical path switch vs single-m



Discover ROI-boosting fiber choices: Single Mode vs Multimode Fiber. Get the right speed & savings for your network—download our guide for free today!



Single Mode fibers have a smaller core, allowing light to travel in a single, straight path, ideal for long distances with less signal loss. Multi-mode ...



Single Mode fibers have a smaller core, allowing light to travel in a single, straight path, ideal for long distances with less signal loss. Multi-mode fibers have a larger core, allowing...



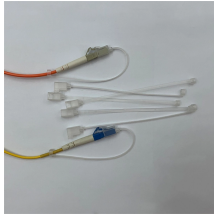
Discover the key differences between single-mode and multi-mode fiber optical switches. Learn about their applications, performance, and which one is best for your network needs.



Choosing the right one isn't just a technicality; it's a crucial decision that impacts performance, scalability, and budget. The two primary contenders are Single-Mode Fiber (SMF) ...



Explore the differences between OS1, OS2 (single-mode) and OM1, OM2, OM3, OM4, OM5 (multimode) fibers. Learn their speeds, distances, and ideal uses for data centers and telecom networks.



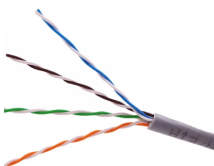
The two main types of optical fiber cables are single-mode fiber (SMF) and multimode fiber (MMF). Whereas hair-thin single-mode fibers send light along one pathway, multi-mode fibers ...



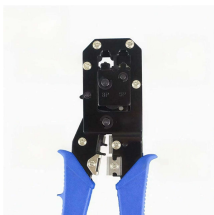
Discover the ultimate comparison of single mode vs multimode fiber—covering physics, cost, distance, and data center strategies for future-ready networks.



What's the difference between SMF and MMF? Compare OS2, OM3, OM4, and OM5 fiber for distance, cost, and 800G AI performance. 2026 Technical Engineering Guide.



Multi-mode vs single-mode fiber transceivers explained. Learn the key differences, distance capabilities, and applications to choose the right solution.



Master fiber optic technology: A deep dive into Single-Mode vs. Multi-Mode, OM1/OS ratings, distance ranges, and best practices.

Contact Us

For more information, pricing, or custom solutions, please contact us:

Website: <https://www.samastersbaseball.co.za>

Email: sales@samastersbaseball.co.za

Phone: +27 63 874 2095

Address: 15 Innovation Drive, Technopark, Stellenbosch, 7600, South Africa

This document is for informational purposes only. Specifications subject to change without notice.

