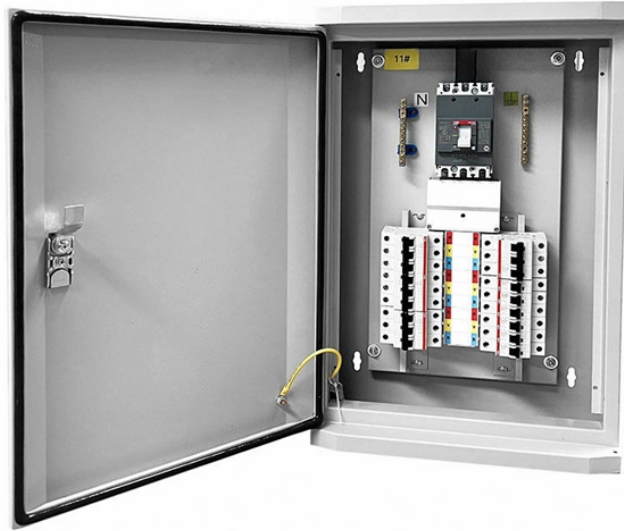


Patch cord for optical transceiver module



Patch cord for optical transceiver module



SC/APC to SC/APC Fiber Optic Internet Cable, Armored Single Mode Patch Cable, Fiber Optic Jumper Optical Patch Cord - SIMPLEX - 9/125um - OS1/OS2 Compatible, LSZH White, 2m



By properly matching patch cords, the performance advantages of optical modules can be fully utilized to ensure efficient and stable operation of network connections in data centers.



We have been producing MTP/MPO optical patch cables corresponding to 1.6T, 800G and 400G optical modules used in AI data centers ...



LC-LC patch cables are the most common and directly compatible option for modern SFP modules. They support both single-mode and multimode SFP applications and require no adapters in ...



Deploying optical modules requires the right fiber patch cable. It directly affects network connection stability, performance, and maintenance. This article will explain how to pick the right fiber ...



We have been producing MTP/MPO optical patch cables corresponding to 1.6T, 800G and 400G optical modules used in AI data centers for a long time. We can customize MTP/MPO ...



When 40G-SR4/PSM4, 100G-SR4/PSM4 and other parallel transmission optical modules are organized in a network, MPO patch cables will be used to connect from the optical modules, and ...



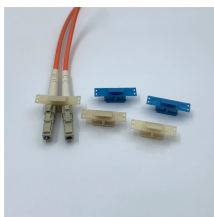
Ensure optimal network stability and efficiency by selecting the right optical modules and patch cords for your fiber network system. Make informed choices for superior performance.



Fiber Optic Patch Cable Multimode SC/FC (1 meter)
Specifications Manufacturer Corning Cable Type
Patch Cord Length 1 m (3 ft) Fiber Mode
Multimode (OM1, OM2) Diameter 2 mm Sheath
50/12...



As a professional optical module manufacturer, Svelol provides this comprehensive guide to help you master the essentials of optical module and patch cord matching for reliable, high ...



Choosing the correct MPO|MTP fiber patch cord to match an optical transceiver involves several key considerations. Here's a step-by-step guide to ensure you select the appropriate MPO|MTP patch cord:

Contact Us

For more information, pricing, or custom solutions, please contact us:

Website: <https://www.samastersbaseball.co.za>

Email: sales@samastersbaseball.co.za

Phone: +27 63 874 2095

Address: 15 Innovation Drive, Technopark, Stellenbosch, 7600, South Africa

This document is for informational purposes only. Specifications subject to change without notice.

