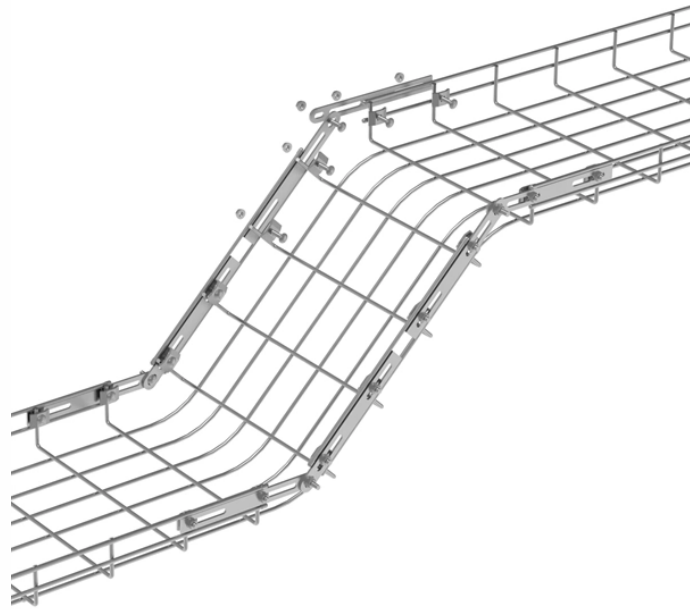


# **Papua New Guinea Explosion-proof Distribution Box Model**



## Papua New Guinea Explosion-proof Distribution Box Model



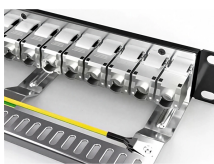
rocket. For outdoor use, rainproof cover or protective cabinet can b. added. The material can be customized according to user requi. ments; Steel pipe or cable wiring is acc.



When ordering, the product parameters and the required quantity should be specified in strict accordance with the meaning of the model; when ordering, the user should provide detailed ...



The external dimensions of the distribution cabinet can be determined according to the electrical schematic diagram or technical data provided by the user and the corresponding explosion-proof ...



BARTEC offers one of the most extensive ranges of explosion-proof and substance-resistant components, devices, and systems for controlling, switching, and ...



Home >> Products >> Explosion Proof Electric Apparatus >> BM (D)X52-S Series Explosion-proof Distribution Boxes



CZ Electric Co., Ltd was established in 1990, is a CZ1290 Explosion-proof distribution boxes suppliers, and is headquartered in Jiaxing City, Zhejiang Province, CZ can provide users with comprehensive ...



Box type product adopts high quality steel plate welding structure; the main cavity and auxiliary cavity are of up and down structure; wall type installation; bottom inlet, front operation and back overhauling.



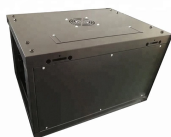
The document provides specifications for the BXM (D)51 Series Explosion-proof Illumination and Power Distribution Boxes, designed for use in hazardous environments (Zones 1, 2, 21, and 22).



The product structure mainly consists of cover, housing, explosion-proof latch, built-in circuit breaker or explosion-proof circuit breaker, and terminal blocks.



Discover explosion proof power distribution boxes with IP55/66 ratings, CE certification, and durable electrical enclosures for industrial safety.



The XL type low-voltage power distribution cabinet uses domestically designed new components. The enclosure is made of bent steel plates, featuring a compact structure, easy maintenance, and flexible ...



·Equipped with specialized hinge structure, which can prevent the flameproof joints from damage when opening and closing the box, and greatly prolong the service life of box. The boxes can be combined ...

## Contact Us

For more information, pricing, or custom solutions, please contact us:

Website: <https://www.samastersbaseball.co.za>

Email: [sales@samastersbaseball.co.za](mailto:sales@samastersbaseball.co.za)

Phone: +27 63 874 2095

Address: 15 Innovation Drive, Technopark, Stellenbosch, 7600, South Africa

This document is for informational purposes only. Specifications subject to change without notice.

