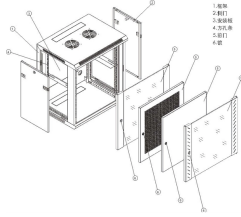


PDMS Cable Tray Modeling Guide



PDMS Cable Tray Modeling Guide



By the end of this course students will be able to create and update, and check equipment tray and conduit elements. They will have a good understanding of how the system is working, what it will ...



Before accessing 1 of these option files, using the "members form, navigate to a suitable cable tray or branch "as you would in Design.



Featured resources Cable tray design considerations guide Our cable tray design considerations guide details key factors to consider when designing cable tray systems for industrial and commercial ...



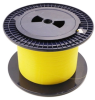
Course Content AVEVA PDMS (Plant Design Management System) 0/11 Module 1: Introduction to PDMS Module 2: Equipment Modeling Module 3: Piping Design Module 4: Structural Modeling ...



According to the layout drawing required by the customer and the layout direction of the surrounding cable tray, typical installation drawing and layout drawing, design requirements, etc., a complete ...



how to start tray modelling in pdms



The book is an indispensable reference guide to the various methods used by current medical practitioners working at the forefront of 3D printing applications in medicine.



Key insights into fabrication and processing will guide readers through the tradeoff choices in designing such platforms.



This comprehensive guide aims to provide in-depth knowledge about the fundamentals of PDMS cable tray modeling, best practices, standards, and troubleshooting techniques.

Contact Us

For more information, pricing, or custom solutions, please contact us:

Website: <https://www.samastersbaseball.co.za>

Email: sales@samastersbaseball.co.za

Phone: +27 63 874 2095

Address: 15 Innovation Drive, Technopark, Stellenbosch, 7600, South Africa

This document is for informational purposes only. Specifications subject to change without notice.

