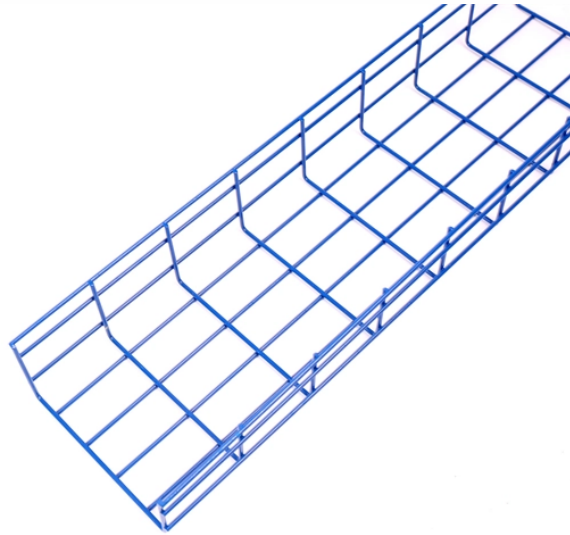
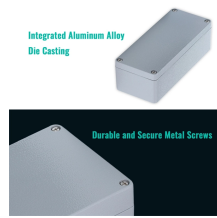


Optocoupler pin 1640



Optocoupler pin 1640



When the infrared LED is ON, the phototransistor turns ON (saturates), pulling the output pin LOW. When the LED is OFF, the phototransistor is OFF, and the pull-up resistor holds the output ...



This tutorial gives an introduction to the HY-M154 / 817 optocoupler module. Moreover, a simple application is programmed that shows how to wire and how to program an Arduino when ...



Optocouplers, also known as opto-isolators, are components that transfer electrical signals between two isolated circuits by using infrared light. As an isolator, an optocoupler can prevent high voltages from ...



The pin configuration of PC817 Optocoupler is shown below, This IC includes 4 pins like 2 input pins and 2 output pins where each pin and its functionality is discussed below.



Connect the anode (Pin 1) to a digital output pin of a microcontroller and the cathode (Pin 2) to the ground through a current-limiting resistor. On the output side, connect the collector (Pin 4) to the ...



It is packaged in a 4pin DIP, available in wide-lead spacing option and SMT gullwing lead-form option. Input-output isolation voltage(rms) is 5.0kV. Collector-emitter voltage is 80V(*) and CTR is 50% to ...



PC817 OverviewPC817 PinoutPcb817 ApplicationsPC817 Application CircuitsPC817 Arduino ProjectThe PC817X series optocoupler IC is comprised of an IRED (Infrared Emitting Diode, or IR LED) and a phototransistor optically coupled to it. It functions as the inner phototransistor conducts when receiving the IR LED's emitting light. These two parts are not hard-electrically connected; thus, it provides convenient optical noise isolation comp...See more on easybom .sb_d oct_txt{color:#4007a2;font-size:11px;line-height:2 1px;margin-right:3px;vertical-align:super}.b_dark .sb_doct_txt{color:#82c7ff}p>.news_dt{color:#76 7676}Vishay Intertechnology



An optocoupler, also known as photocoupler or opto-isolator, is a device which can transfer an electrical signal across two galvanically-isolated circuits by way of optical coupling.



Using PC817 optocoupler is very easy, there are four pins shown in the above pinout details. The pin 1 is anode or positive pin of the IR LED should be connected from the output signal ...



An optocoupler (or opto-isolator) is a component that transfer signals between circuits using light. In this guide, you'll learn how they work and how you can use one in your own projects.



Optocouplers allow you to send a signal to a circuit that is completely isolated from the electronic world. Consider an optocoupler to be a type of transistor, except that it sends light and a ...

Contact Us

For more information, pricing, or custom solutions, please contact us:

Website: <https://www.samastersbaseball.co.za>

Email: sales@samastersbaseball.co.za

Phone: +27 63 874 2095

Address: 15 Innovation Drive, Technopark, Stellenbosch, 7600, South Africa

This document is for informational purposes only. Specifications subject to change without notice.

