

# OLT replaces the core switch



## Overview

OLT is the main driver of the FTTH system functioning to convert the optical signals to electric signals and relay them to a core Ethernet switch. OLT replaces multiple layer 2 switches at distribution points connected with backbone cabling or horizontal cabling via. OLT (Optical Line Terminal) and switches are critical devices in optical communication networks, but their optical modules differ significantly in types, functionalities, and applications. It converts data signals, manages bandwidth, and connects hundreds of users over a single optical fiber infrastructure. What is an OLT?

Definition: An Optical Line Terminal (OLT), also called. Connection Point to the Core Network: The OLT serves as the interface between the service provider's core network and the optical distribution network (ODN). Let's discuss each one separately: 1. It may sometimes include.

## OLT replaces the core switch



An OLT-based architecture centralizes switching and routing at the fiber core, reducing intermediate access switches and simplifying cabling. Modern compact OLT devices can be ...



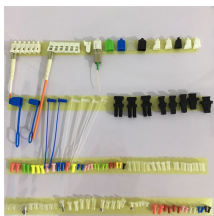
Learn how OLT works in GPON and FTTH networks. Covers OLT architecture, upstream/downstream process, wavelengths, and 2025 technology trends.



In summary, OLT and Switch are both fundamental networking devices, but they serve different purposes. The OLT is an essential part of a fiber-optic network infrastructure, providing ...



OLT is the main driver of the FTTH system functioning to convert the optical signals to electric signals and relay them to a core Ethernet switch. OLT replaces multiple layer 2 switches at distribution ...



The OLT serves as the starting point of a PON, connecting to the core switch via an Ethernet cable. The primary role of an OLT is to convert, frame, and ...



OLTs are crucial in delivering high-speed broadband services over fiber optics, especially in PON architectures, while switches are fundamental components in LANs, facilitating ...



Optical Line Terminal (OLT) The OLT is the starting point of the passive optical network, which is connected to the core switch via an Ethernet cable. The primary function of the OLT is to ...



Learn how GPON OLT works, its features, and how to choose the right device for efficient fiber network deployment.



The OLT serves as the starting point of a PON, connecting to the core switch via an Ethernet cable. The primary role of an OLT is to convert, frame, and transmit signals for the PON ...



OLT (Optical Line Terminal) and switches are critical devices in optical communication networks, but their optical modules differ significantly in types, functionalities, and applications.



Compare optical module types in OLT vs switches, analyze WiFi4/WiFi5/WiFi6/WiFi7 differences, and learn optical cable types (OS2/OM3/OM5) for network infrastructure upgrades.

## Contact Us

For more information, pricing, or custom solutions, please contact us:

Website: <https://www.samastersbaseball.co.za>

Email: [sales@samastersbaseball.co.za](mailto:sales@samastersbaseball.co.za)

Phone: +27 63 874 2095

Address: 15 Innovation Drive, Technopark, Stellenbosch, 7600, South Africa

This document is for informational purposes only. Specifications subject to change without notice.

