

Not configured in the optical module MML



Overview

Remove and reinstall the optical module. If the fault persists, collect log information and contact Huawei technical support personnel. The device management or driver software has a bug. When you plan to replace a configured optical module with a different type of optical module, you must clear the configurations of the old module before you install the new module. Check compatibility between the optical module and switch. Most switch brands have specific compatibility requirements. In this article, we will focus on teaching you how to troubleshoot and solve the common three categories of optical module failure.

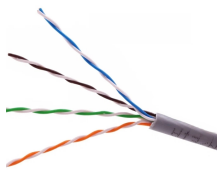
Not configured in the optical module MML



The document discusses troubleshooting for ONU registration failures and ...



In this article, we will focus on teaching you how to troubleshoot and solve the common three categories of optical module failure. First, the transmission class of the optical module fault ...



Non-OEM SFP modules may not necessarily adhere to the vendor's specifications, which could lead to the module not being detected, reduced performance, or the possibility of the ...



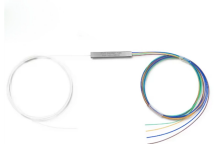
This chapter describes how to configure the Optical Amplifier Module and Protection Switching Module (PSM). When you plan to replace a configured optical module with a different type ...



In short, this is not an optical link problem but a module identification / CMIS compliance issue. If the module does not advertise valid 400G SR4 compliance and power class, ConnectX-7 ...



If no optical power meter is available, replace the optical module with a normal one of the same type to check whether the optical module is faulty. You can also run the display interface transceiver verbose ...



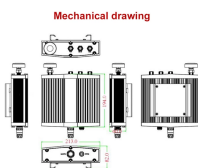
If your optical module isn't working properly, how to find and fix the problem? We list 5 main issues to help locate and repair network faults!



This article is intended to provide a basic understanding and layer 1 troubleshooting steps in the event the case links do not come ON-LINE while using small form-factor pluggable (SFP) modules.



Always set the same mode for the two optical channels connected together via the fiber-optic cable. When operating with devices that do not provide fiber-optic link monitoring, this mode cannot be ...



Based on typical issues encountered with optical modules in daily switch applications, this document summarizes basic troubleshooting steps for resolving common faults:

Contact Us

For more information, pricing, or custom solutions, please contact us:

Website: <https://www.samastersbaseball.co.za>

Email: sales@samastersbaseball.co.za

Phone: +27 63 874 2095

Address: 15 Innovation Drive, Technopark, Stellenbosch, 7600, South Africa

This document is for informational purposes only. Specifications subject to change without notice.

