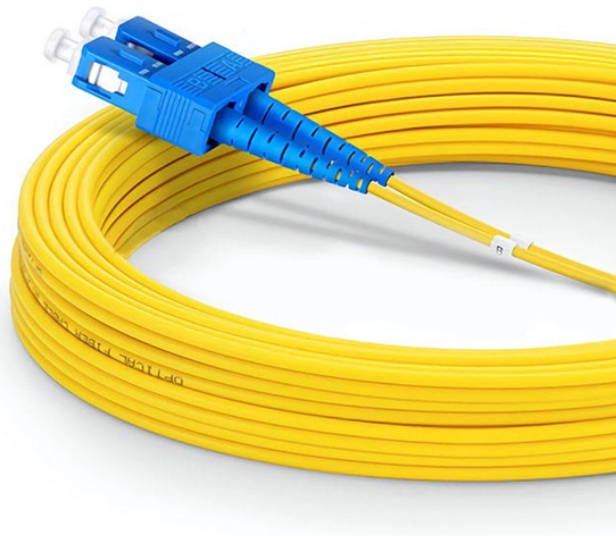


National Standard for Cable Tray Wiring



Overview

NEMA BI 50051 standard for Cat Van Loi wire mesh cable tray is the standard for Metal Cable Tray Systems. The latest edition (2024) defines strict requirements for: Construction, materials, and load capacity. Covers construction and test requirements for. The National Electrical Manufacturers Association (NEMA) also publishes three consensus standards that apply to the proper manufacture and installation of cable trays: ANSI/NEMA-VE 1-1998, Metal Cable Tray Systems; NEMA-VE 2-1996, Metal Cable Tray Installation Guidelines; and NEMA-FG-1998. These systems provide an efficient and adaptable solution for managing a wide range of cables, including power cables, control cables, Ethernet, and fiber optic lines. The flexibility and scalability of cable trays make them an ideal choice for environments where cable density and organization can. association representing the major electrical equipment manufac-turers in the U.

National Standard for Cable Tray Wiring



The National Electrical Code (NEC) lays out specific guidelines regarding which cables are permitted for use in these trays, ensuring safety and compliance with industry standards.



NEMA Standard VE 2-2006 addresses shipping, handling, storing, and installing cable tray systems; it also provides information on cable tray maintenance and system modification.



These documents: ANSI/NEMA VE-1, Metal Cable Tray Systems; NEMA VE-2, Cable Tray Installation Guidelines; and NEMA FG-1, Non Metallic Cable Tray Systems, are an excellent industry resource in ...



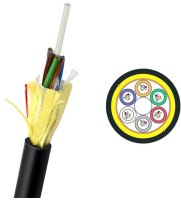
It provides rules for acceptable wiring methods that can be installed in cable trays, including conditions for use. It addresses uses permitted and not permitted for cable trays.



NEMA BI 50051 standard for Cat Van Loi wire mesh cable tray is the standard for Metal Cable Tray Systems. The latest edition (2024) defines strict requirements for: Construction, materials, and load ...



Cable tray system design shall 269 comply with National Electrical Code® (NEC®) Article 392, NEMA BI-50015 (formerly VE 1), and NEMA 270 FG 1, and follow safe work practices as described in NFPA ...



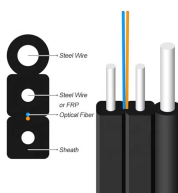
Cable Tray Technical Guide A practical guide to product selection and installation This guide for engineers and installers has been developed by ABB as a practical reference regarding cable tray ...



Tray-rated cables are required for cable tray installation, so using a channel cable tray system or wire mesh system for exits may be more convenient and economical.



This standard specifies the requirements for metal cable trays and associated fittings designed for use in accordance with the Canadian Electrical Code (CE Code), Part I, and the National Electrical Code® ...



This standard specifies the requirements for nonmetallic cable trays and associated fittings designed for use in accordance with the rules of the Canadian Electrical Code (CEC) Part 1, and the National ...

Contact Us

For more information, pricing, or custom solutions, please contact us:

Website: <https://www.samastersbaseball.co.za>

Email: sales@samastersbaseball.co.za

Phone: +27 63 874 2095

Address: 15 Innovation Drive, Technopark, Stellenbosch, 7600, South Africa

This document is for informational purposes only. Specifications subject to change without notice.

