

Monochromatic laser diode



Overview

A very common laser question is, "When is a HeNe more suitable than a diode or vice-versa?"

" The answer to this question is application dependent. The easiest way to make an informed decision is to understand.



Monochromatic laser diode



Passively-cooled direct diode laser for Imaging, Computer to Plate (CtP) and Illumination, mounted with Monocrom Clamping™ technology where the combination of its almost zero smile effect and proper ...



Diodes can be held using one of our Diode Mounts, which are convenient because they offer a ball and socket aiming adjustment and adapt to 1/4-20 threading. However, diodes can also be held in our V ...



These devices are capable of producing an intense laser ray with uniformly sized light waves. This characteristic makes laser beams extremely bright and concentrated. These diodes ...



A laser diode is a semiconductor device that emits coherent and monochromatic light through the process of stimulated emission. It works by applying a forward bias to a p-n junction, causing ...



A laser diode emits monochromatic light, meaning it produces light of a single wavelength or color. This wavelength depends on the semiconductor material and the energy band gap used in ...



Welcome to Monocrom · Worldwide Leading Manufacturer of Advanced Diode Laser Technology for Medical & Aesthetics, Industrial, Defense & Aerospace and Research.



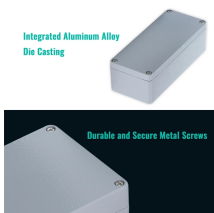
When used within a circuit, they are often denoted as being a laser diode to distinguish them from other forms of light emitting diode. The laser diode is a semiconductor PN junction diode is a form of diode ...



Laser diodes emit coherent, monochromatic light and offer high efficiency, allowing for precise control and delivery of laser energy. There are different types of laser diodes, each with its unique ...



The monochromatic laser light is split in two beams, which are collimated by means of lens in the flow of the fluid under test. The optical radiation scattered by the fluid is collected with the photo-diode.



Laser action (with the resultant monochromatic and coherent light output) can be achieved in a p-n junction formed by two doped gallium arsenide layers. The two ends of the structure need to be ...

Contact Us

For more information, pricing, or custom solutions, please contact us:

Website: <https://www.samastersbaseball.co.za>

Email: sales@samastersbaseball.co.za

Phone: +27 63 874 2095

Address: 15 Innovation Drive, Technopark, Stellenbosch, 7600, South Africa

This document is for informational purposes only. Specifications subject to change without notice.

