

Main Process Flow of Core Switches



Overview

They operate at the data link layer (Layer 2) or the network layer (Layer 3) of the OSI (Open Systems Interconnection) model, facilitating the communication of devices on a network by receiving, processing, and forwarding data to the target device. Simply put, it's the kingpin that keeps your network humming. You may also want to. Professional networks are structured using a three-tier hierarchical model to ensure scalability and efficient traffic management. Executive Summary Designing a scalable enterprise network requires more than. Network switches are fundamental devices used in the construction of most computer networks. Unlike edge switches, core switches are the network's backbone, improving data routing and performance. This is essential for businesses, data centers, and.

Main Process Flow of Core Switches



Switches are one of the most important things for transferring information between different endpoints. Some of the benefits are mentioned below. Switches are having full-duplex ...



A core switch typically sits at the center of a network and interconnects various switches and routers. It's responsible for managing the network's routing and ...



Core—This layer supplies connectivity to security resources such as hardware-accelerated Secure Sockets Layer (SSL) inspection, filtering of communications between segments, access to the ...



Core switches typically have redundant power supplies, redundant supervisors, and multiple connection paths. They're built to never go down, because when the core fails, everything fails.



Discover what a core switch does in a 3-tier network model. Learn about ASIC routing, collapsed core vs dedicated core topologies, and SMB sizing guides.



A: Core switches add value to the aggregation layer of the network by effectively merging the output of several distribution layers, managing data flow, and providing swift connectivity between ...



At the heart of their functionality, core switches aggregate data from multiple network devices via distribution switches. This is essential for consolidating information from various parts of ...



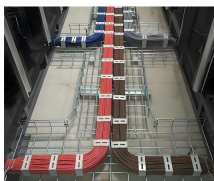
By selecting Core Switch devices that align with specific needs, businesses can achieve high-speed, reliable data forwarding, ensuring efficient network operation. Core Switches also ...



Discover what a Core Switch is, its pivotal role in network architecture, and how it boosts performance and reliability in your data infrastructure.



Unlike access switches, which connect directly to end-user devices, the core switch focuses on aggregating and routing traffic between other switches, minimizing latency and ...



The core switch aggregates traffic from multiple mid-level network devices, requiring immense processing power to prevent bottlenecks. It performs high-speed routing, deciding the ...

Contact Us

For more information, pricing, or custom solutions, please contact us:

Website: <https://www.samastersbaseball.co.za>

Email: sales@samastersbaseball.co.za

Phone: +27 63 874 2095

Address: 15 Innovation Drive, Technopark, Stellenbosch, 7600, South Africa

This document is for informational purposes only. Specifications subject to change without notice.

