

Irrecoverable bit error rate



Overview

It is the percentage of bits that have errors relative to the total number of bits received in a transmission, usually expressed as ten to a negative power. For example, a transmission might have a BER of 10^{-5} , meaning that on average, 1 out of every 100,000 bits transmitted. In digital transmission, the number of bit errors is the number of received bits of a data stream over a communication channel that have been altered due to noise, interference, distortion or bit synchronization errors. The bit error rate (BER) is the number of bit errors per unit time. These errors arise because the physical signal representing the bit is distorted or contaminated as it travels through. Bit Error Rate (BER) is a crucial metric in signal processing and communication systems, measuring the frequency of errors in data transmission.

Irrecoverable bit error rate



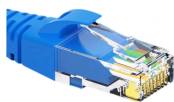
Learn about Bit Error Rate (BER), its significance in digital communication, and methods for measuring it, particularly within a VSAT system.



Bit error rate measures data errors in networks. High BER leads to slow speeds, lost files, and poor call quality. Learn how BER impacts performance.



In digital transmission, the number of bit errors is the number of received bits of a data stream over a communication channel that have been altered due to noise, interference, distortion or bit ...



It is the percentage of bits that have errors relative to the total number of bits received in a transmission, usually expressed as ten to a negative power. For example, a transmission might ...



This article systematically explains Bit Error Rate (BER) as a key performance metric for high-speed optical communication systems, covering its definition, testing methods, evaluation ...



Understand what Bit Error Rate (BER) means, how it affects digital signal integrity, and discover practical ways to measure and reduce BER with LINK-PP high-speed connectivity solutions.



The Bit Error Rate (BER) is the number of bit errors per unit time divided by the total number of transferred bits during a studied time interval. BER is a unitless performance measure, ...



Discover the importance of Bit Error Rate (BER) in signal processing and its impact on communication systems. Learn how to measure and minimize BER for optimal data transmission.



The bit error rate is a measure of how many bits are received in error compared to those transmitted. Ideally if you send a stream of binary "ones" and "zeroes" down a link they will all arrive in ...



The calculation of the Bit Error Rate is a straightforward ratio: the number of erroneous bits received is divided by the total number of bits transmitted over a specific measurement interval.

Contact Us

For more information, pricing, or custom solutions, please contact us:

Website: <https://www.samastersbaseball.co.za>

Email: sales@samastersbaseball.co.za

Phone: +27 63 874 2095

Address: 15 Innovation Drive, Technopark, Stellenbosch, 7600, South Africa

This document is for informational purposes only. Specifications subject to change without notice.

