

Installation sequence of distribution box core



Overview

Choose the right box based on environment (indoor/outdoor), load capacity, and durability. Check for proper IP/NEMA ratings and material quality. Ensure safe placement: install in dry, accessible areas with good ventilation and at appropriate height (typically ~1. In this guide, we'll break down everything you need to know to install a distribution box correctly and confidently. This specification shall be used in conjunction with the latest revision of the. Fiber distribution box is suitable for the wiring connection of optical cable and optical communication equipment, through the adapter in the wiring box, the optical jumper leads the optical signal, and realizes the optical wiring function.

Installation sequence of distribution box core



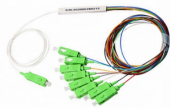
Include wiring diagrams and installation details of equipment indicating proposed location, layout and arrangement, control panels, accessories, piping, ductwork, and other items that must be...



It outlines 4 steps: 1) Pre-installation preparation including reviewing plans and ensuring safety, 2) Mounting panels and running wiring, 3) Installing circuit breakers or fuses, and 4) Terminating ...



Learn how to install a distribution box safely and correctly. Covers wiring, placement, standards, and expert tips for a compliant setup.



The Fiber Optic Distribution Box features a convenient flip-up design, facilitating effortless fiber management during installation. The individually installed splicing trays can be easily repositioned as ...



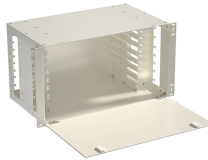
Before starting the installation, finding a proper place for putting the distribution box is crucial, because it largely decides the safety and convenience of maintenance. Let's see what factors ...



The Fiber Optic Distribution Box features a convenient flip-up design, facilitating effortless fiber management during installation. The individually installed splicing ...



In the systems fed with single core cables; the cable arrangement and phase sequences should be applied as stated below in single row sequence. There are many configurations about the systems ...



An 8-core fiber distribution box is ideal for small-scale indoor or outdoor fiber networks, offering compact size, stable performance, and efficient organization of exactly eight fibers with proper installation and ...



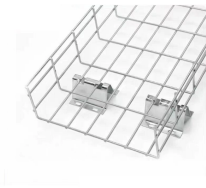
This document represents the minimum requirements and specifications for the installation of an electrical underground residential distribution system to be transferred to Oncor Electric Delivery ...



In the systems fed with single core cables; the cable arrangement and phase sequences should be applied as stated below in single row sequence. There are ...



OTRANS is a leading fiber optic distribution box manufacturer. We offer a wide range of 1-24 core FDB boxes and ODF cabinets for indoor/outdoor FTTX deployment. Durable, IP65 rated, and easy to ...



All connectors shall be so designed and manufactured as to offer ease of installation as these are to be used in overhead installations, design shall be such that full tightening of nuts and bolts should be ...

Contact Us

For more information, pricing, or custom solutions, please contact us:

Website: <https://www.samastersbaseball.co.za>

Email: sales@samastersbaseball.co.za

Phone: +27 63 874 2095

Address: 15 Innovation Drive, Technopark, Stellenbosch, 7600, South Africa

This document is for informational purposes only. Specifications subject to change without notice.

